



SALEEN GROUND EFFECT KIT 1999-2004 MUSTANG



PART# 10-8002-C13187B

SALEEN

Saleen Performance, Inc. 1225 East Maple Rd. Troy, MI 48063 248-743-4800
www.saleen.com



***IF YOU ARE NOT EXPERIENCED IN THE
AREA OF AUTOMOTIVE MECHANICS,
WE STRONGLY URGE THAT YOU REFER
THIS INSTALLATION TO A CERTIFIED
INSTALLER OR TECHNICIAN***

I Front Fascia Removal

Obtain the following tools:

Screwdriver

Panel pullers

Philips #2 socket, 1/4" drive

Drill with 1/8" bit

1/4" drive ratchet with 7/16" socket

NOTE: Keep all removed hardware and brackets, as many of them will be used to install the Saleen body kit.

1. Remove the single screw that attaches the front wheel well liner to the front fascia; repeat on both sides of the car (FIGURE 1).

2. Unscrew the center portion of the plastic fasteners attaching the top of the grille and front fascia to the frame. Use a panel puller to pull out the nut-insert (the outer portion of the plastic fastener). (FIGURE 2)

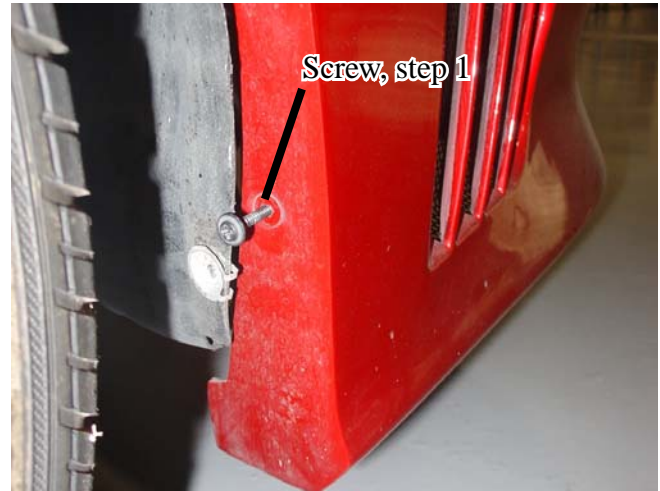


FIGURE 1

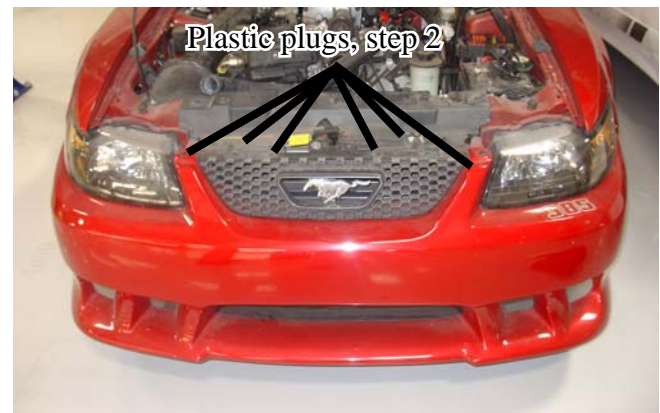


FIGURE 2

3. Using a 1/4" drive ratchet and 7/16" socket, remove the two nuts from the studs of the front fascia mounting brackets. These nuts are located in front of the wheel well liner, inside the front fascia (closer to the ground than the headlights). FIGURE 3 shows the bracket and studs on the passenger side of the front fascia, after the nuts have been removed; the view is looking to the front of the car, in between the fender sheetmetal and the front fascia.



FIGURE 3

4. Unplug the fog lights from the front fascia and remove the bolts used to fasten on the fog lights.

5. After carefully removing the front fascia, drill out all the rivets that hold the fascia mounting bracket in place. Repeat on both sides.

6. Remove the two screws that hold the stock grille to the stock front fascia. You will reuse the grille and hardware.

II Rear Fascia Removal

Obtain the following tools:

1/4" drive ratchet

Phillips #2 socket, 1/4" drive

8" extension, 1/4" drive

7/16" socket, 1/4" drive

panel puller/plastic plug puller

1. Using the panel puller, remove the three plastic fasteners from the bottom of the rear fascia.
2. Using the 1/4" drive ratchet and Phillips socket, remove the two screws holding each side of the rear fascia to the rear of each rear wheel well (FIGURE 1).
3. Using a panel puller, remove the four plastic plugs nearest the trunk latch, on the inside rear wall of the trunk. (FIGURE 2).
4. Twist off the two plastic fasteners at the upper corners of the back wall of the trunk (FIGURE 3). Remove the back wall trunk liner.
5. Using a panel puller, remove the two plastic caps/plugs on each upper corner of the trunk (four caps total), and remove the liners for the passenger and driver side trunk liners. (FIGURE 4).



FIGURE 1



FIGURE 2



FIGURE 3



FIGURE 4

6. Using the 7/16" socket on 8" extension and 1/4" drive ratchet, remove the two nuts with sealed neoprene washers from the bottom corners of the trunk. There are two on the driver's side and two on the passenger's side. (FIGURE 5)

7. Using the 7/16" socket on 8" extension and 1/4" drive ratchet, remove the three nuts with sealed neoprene washers from the rear wall of the trunk; some of the washers are harder to see behind the layer of sheetmetal but are easily accessed through the holes in the sheetmetal. (FIGURE 6)

8. Carefully remove the rear fascia from the car.



FIGURE 5



FIGURE 6

III Side Skirts Removal

Obtain the following tools:

1/4" drive ratchet

Phillips #2 socket, 1/4" drive

Panel puller

1. Using the Phillips #2 socket on the 1/4" drive ratchet, remove the stock screw from the front and the rear face of each side skirt. (FIGURE 1)

2. Using the panel puller, remove the five plastic plugs which hold the side skirt to the pinchweld on the underside of the car. (FIGURE 2)

3. Open the door, and carefully pull up the rubber strip from the door sill. (FIGURE 3)



FIGURE 1

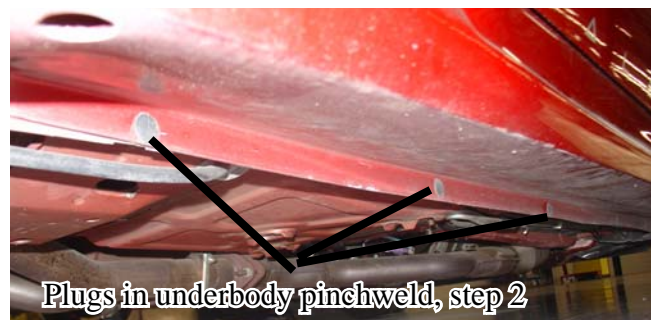


FIGURE 2

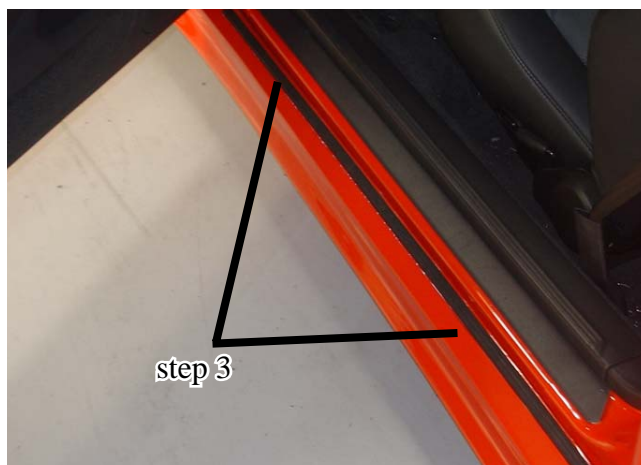


FIGURE 3



IV Front Fascia Subassembly & Installation

Obtain the following tools:

Drill with 1/4" bit

Philips #2 screwdriver

1/4" drive ratchet

Philips socket, 1/4" drive

7/16" socket, 1/4" drive

Drill with #28 or 9/64" bit

Center punch

NOTE: BEFORE INSTALLING ANY PARTS, BE SURE TO TEST FIT THEM.

1. Using a drill with a 1/4" bit, open the holes on the inside of the Saleen front fascia where the stock side brackets will go. Do not allow the holes to expand upwards, just drill straight down to allow clearance for the studs on the brackets to get inside.

2. Insert the brackets inside the Saleen front fascia.

3. Using a Philips #2 screwdriver, or a 1/4 inch drive air ratchet with a Philips #2 socket, drive #4 size screws (Saleen part# 00-9001-C11634*) through the holes in the smaller front fascia screens into the lobes around the openings in the front fascia. See FIGURE 2 for mounting orientation and screws placement; note FIGURE 2 shows the backside/inside of the front fascia, and is an example of the four forward-facing holes. FIGURE 3 indicates the lobes that you will drive the screen screws into; the two driver side forward-facing openings are shown.

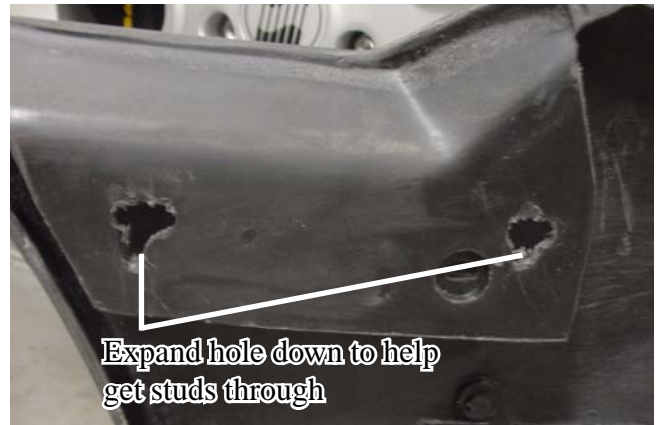


FIGURE 1

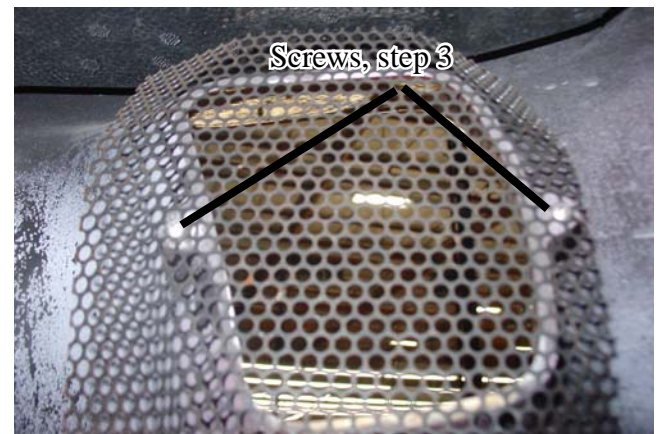


FIGURE 2



FIGURE 3



3. Secure the larger front fascia screens onto the inside of the side vents of the front fascia. Use six screws per screen (FIGURE 4).

4. Unscrew the grille from the stock front fascia (FIGURE 5 is the view looking down at the top of the front fascia and grille).

5. Put the grille in place in the new Saleen front fascia (orientation shown in FIGURE 6). Using a center punch, mark locations to drill through the four holes in the bottom tabs at the back of the grille (FIGURE 5).

6. Drill the four marked holes in the front fascia with the #28 or 9/64" bit. Fasten the grille to the painted front fascia with the stock hardware (FIGURE 5).

7. Carefully place the Saleen front fascia with stock grille on the front of the car. Secure the top of the fascia and grille to the car with the six stock plastic fasteners you removed from the stock front fascia earlier (FIGURE 6).

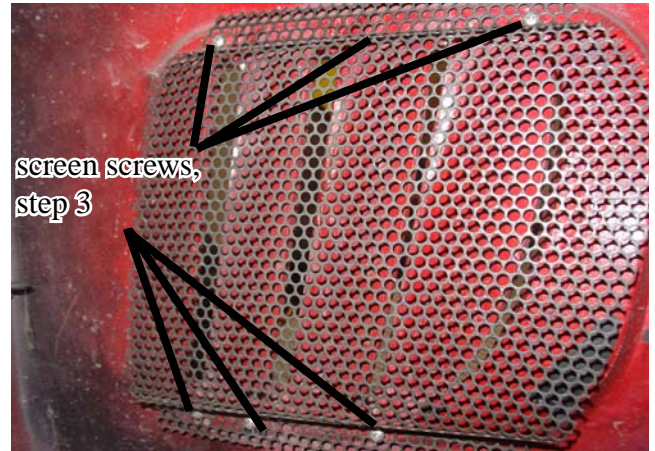


FIGURE 4



FIGURE 5

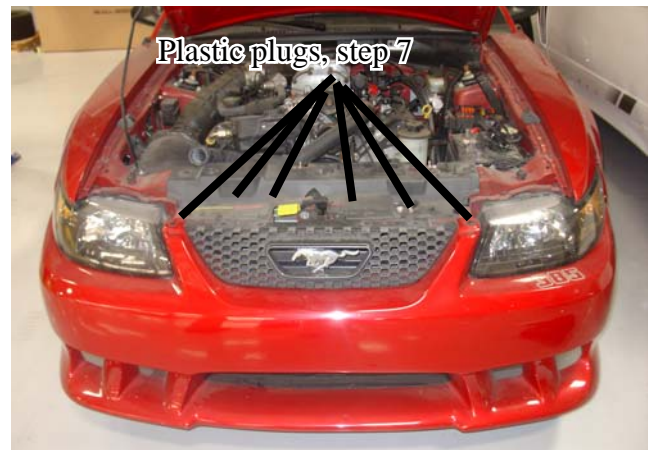


FIGURE 6

8. Push the studs on the front fascia mounting brackets through the holes on the under-body work (below the turn signals/in front of the wheel well) (FIGURES 7 & 8). Replace the stock nuts over the studs and tighten with a 1/4" drive ratchet and a 7/16" socket. Repeat on both sides of the car.

9. Push the front wheel well liner back into place, tucked inside the front fascia, and secure with the stock screw - there is a dimple on each end of the front fascia where the screw will go through to meet the wheel well liner; drill a hole here for each screw.

10. Drill a hole with the #28 or 9/64" bit into the framework inside the wheel well, through the indicated tab on the wheel well liner. Drive the supplied #8 screw (Saleen part# 069-965) through the wheel well liner into the framework. (FIGURE 9)



FIGURE 7



FIGURE 8

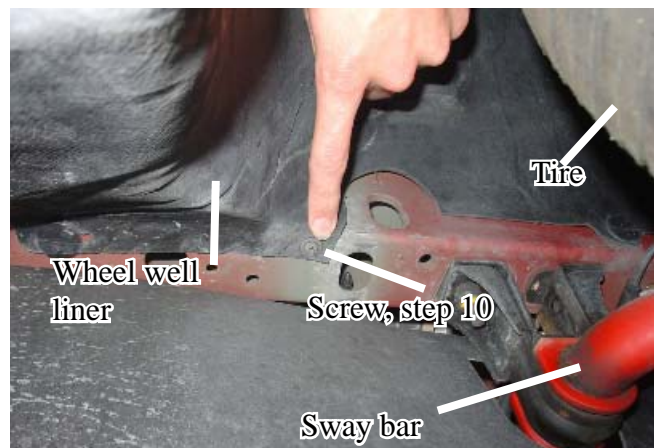


FIGURE 9



V Rear Fascia Subassembly & Installation

Obtain the following tools:

Philips #2 screwdriver

Drill with 1/8" bit

1/4" drive ratchet

8" extension, 1/4" drive

7/16" socket, 1/4" drive

1. Note the orientation of all three rear fascia brackets. Gently pry the center support bracket loose from the rear fascia.
2. Drill out the rivets holding each support bracket to each side of the rear fascia (FIGURE 1).
3. AFTER THE SALEEN REAR FASCIA HAS BEEN PAINTED, attach the screens to the rear fascia (on the inside) using screen screws (00-9001-C11634*). Use 14 screws on each of the three screens that cover the rearward facing openings in the rear fascia. (FIGURE 2)
4. Use 6 screws to attach each pair of side screens to each side of the rear fascia (on the inside). Overlap the two small screens and insert two screws through the pair. (FIGURE 3).



FIGURE 1

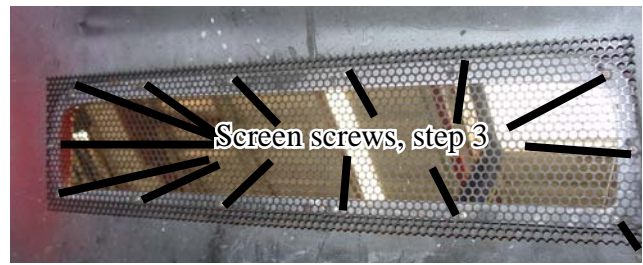


FIGURE 2

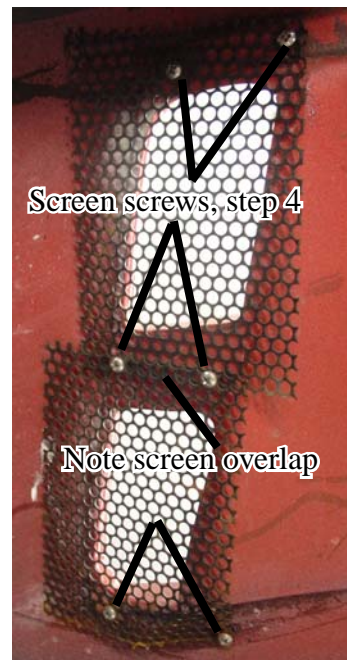


FIGURE 3

5. Line up the side mounting bracket with the sides of the rear fascia; make sure the bend in the bracket is lined up with the bend in the fascia (FIGURE 4; FIGURE 5 shows an overview of the location of the bend).

6. Mark the positions for the holes for the side bracket; the holes will be the same width apart as the studs in the rear fascia, and in the middle of the inboard side tabs on the rear fascia. Drill out the holes with the #28 bit, then open up to a 1/4". You may wish to expand the holes later to allow for easier installation of the rear fascia onto the car.

7. For the center bracket, holes are already marked in the rear fascia (FIGURE 6; FIGURE 7 is an overview). The rear fascia center support bracket will have either three or four studs in it. Line up the center bracket with the Saleen rear fascia, in its stock orientation, and drill out the marked holes to match the studs. Drill out first with the #28 bit, then open up to a 1/4" hole. You may wish to expand later to make installation of the fascia onto the car easier. You will also need to drill one hole on either side of the rear fascia, on the bottom of the fascia. Drill the holes where indicated in Figure 7, and drill them at a low point; make sure they are not visible from the side.

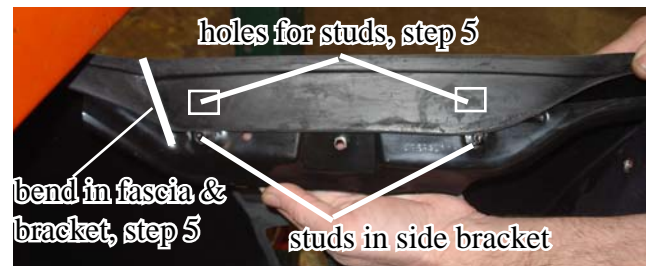


FIGURE 4

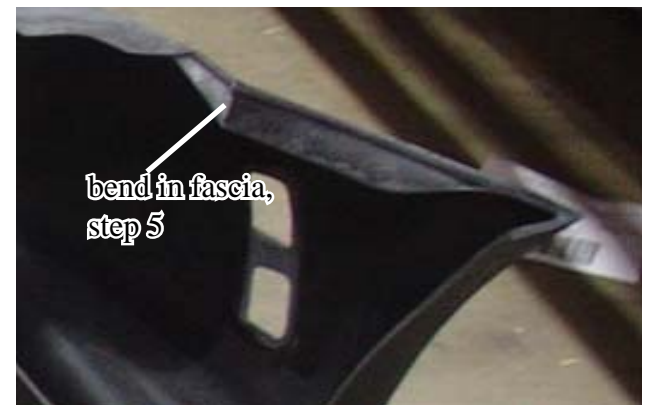


FIGURE 5

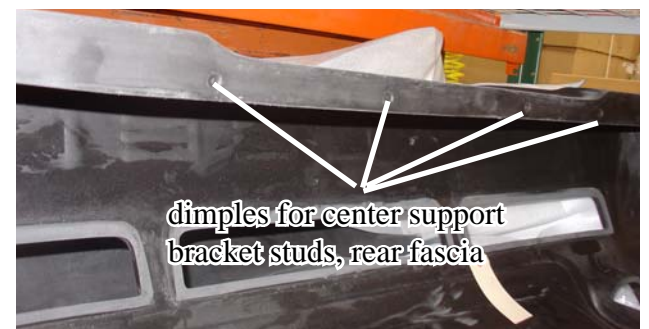


FIGURE 6



FIGURE 7

8. Place the bumper foam (039-031) on top of the bumper, in the orientation displayed in FIGURE 8.

9. Insert all three brackets under the lip of the rear fascia in the same orientation they were on the stock rear fascia; the studs go through existing holes in the rear fascia. (FIGURES 9,10)

10. Place the rear fascia on the bumper, and push the bumper foam back so that the lip of the rear and the bracket are in front of the foam (FIGURE 11).

11. Starting on the passenger side, push the three studs from the support bracket through the holes in the back of the trunk. It helps to pull up on the sides of the fascia when inserting the outer studs of the center support bracket. Hand tighten the three nuts with neoprene washers over the three center support bracket studs. (FIGURE 12)



FIGURE 8

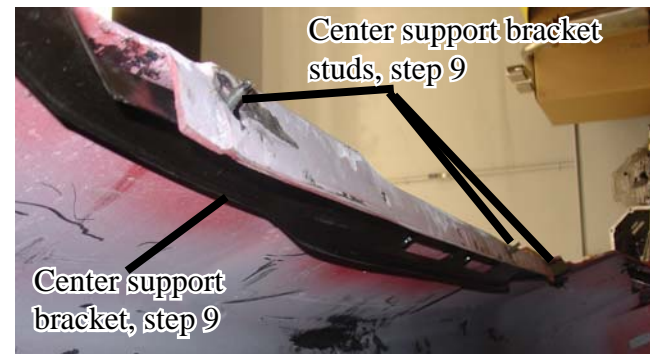


FIGURE 9

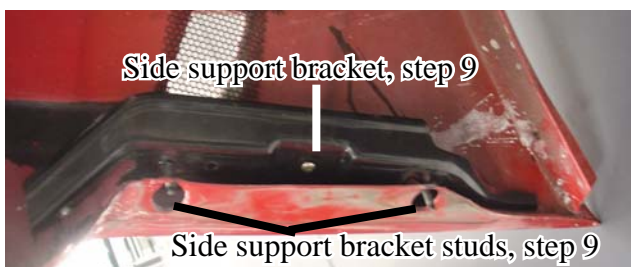


FIGURE 10



FIGURE 11

12. Hold the passenger side mounting bracket in place under the lip of the rear fascia, and insert the two studs into the stock holes in the body. Hand fasten the two nuts with neoprene washers over the studs from the mounting bracket. Repeat on the driver side. (FIGURE 13)

13. Tighten all seven nuts to a snug fit on the mounting bracket studs. Use a 7/16" socket and 8" extension on a 1/4" drive ratchet.

14. Replace the three trunk lining pieces and re-secure with the ten stock plastic fasteners.

15. Reattach the fascia to each wheel well liner using the two stock screws on each side. Tighten with a Philips socket on a 1/4" drive ratchet.

For Dual/Corner Exhaust Rear Fascia:

16. Zip tie (069-703) the rear fascia to the two straps which help hold up the gas tank. It is easier to insert these zip ties to the gas tank straps if you remove the exhaust tip assemblies. (FIGURE 14; FIGURE 15 indicates the location of the driver's side zip tie; repeat also on passenger side). You will need to drill four holes for the zip ties (two holes per zip tie, near each gas tank strap).



FIGURE 12



FIGURE 13



FIGURE 14



FIGURE 15

For Center Exhaust Rear Fascia:

17. Drill two 1/4" holes in the tabs shown to align with the bottom tab of the provided brackets.

18. Zip-tie the smaller tab of the brackets to the fascia tabs so the larger tab points towards the inside of the rear fascia.

19. Place the brackets up against the underside of the metal rear bumper, and mark the locations to drill holes for the bracket.

20. Drill 1/8 inch pilot holes where marked in the rear bumper, then open the holes up using an "H" bit (0.266 inch). Fasten the tabs onto the bumper using the provided M8 bolts.



FIGURE 16

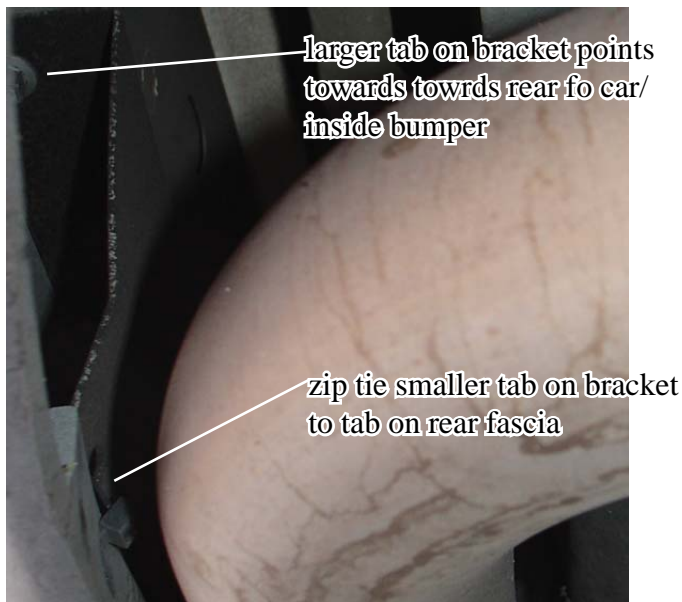


FIGURE 17



FIGURE 18

VI Side Skirts Subassembly & Installation

Obtain the following tools:

Philips #2 screwdriver

Dremel with carbide bit or 80 grit sandpaper

Paint thinner or AM209 plastic prep & cleaner

1/4" drive ratchet with Philips socket

Drill with #28 or 9/64" bit

1. AFTER the side skirts have been painted, attach a single screen (00-9001-C11634*) to the single opening on the inside of each rocker panel. Drive two screen screws into the lobes indicated in FIGURE 1.

2. Using the Dremel with carbide bit, or the sandpaper, rough the inside upper edge of the side skirts on both the front and rear ends of the skirt (the area of front end of driver's side skirt to be prepped is shown in FIGURE 2).

3. Clean the sanded/roughened area of the skirt with paint thinner or plastic cleaner. Wipe the area dry. Wipe 3M automotive adhesion promoter over the prepped area. Apply 3M automotive tape (00-9006-C08519*) over the length indicated in FIGURE 2. Ensure the tape is close to the top edge but is about 2 millimeters below the top of the side skirt so it is not visible when the skirt is installed, but it keeps the top of the skirt securely adhered to the body. Press the tape firmly into place with the butt of the screwdriver or another hard object.

4. Clean the surface of the body in front of and behind the doors, in the areas where the skirts will attach, using paint thinner or another appropriate cleaner. Wipe the area dry.

5. Line the side skirt up with the car. The opening with screen goes to the rear of the door (driver's side skirt shown in FIGURE 3, with screen indicated).



FIGURE 1



FIGURE 2



FIGURE 3

6. Remove the backing from the double-sided tape, carefully line the side skirt up with the car and press firmly into place. Give the tape a minute to begin setting before moving on to the fasteners.

7. Using the #28 bit, drill holes for five screws along the side skirt. Locate the first hole about 1/2" forward from the rearward most end of the side skirt tab. The holes should be located in line with the existing holes, and spread 9" apart. No hole center should be within 1/2" of the existing holes for the rubber strip. (FIGURE 4)

8. Drive countersunk screws (069-125) into the five holes on top of each side skirt.

9. Drive a #8 screw (069-965) into the stock location on either end of the side skirt. Using the drill with the #28 bit, drill a hole about 3/4" down (measurement "A", FIGURE 5) and 3/4" in (measurement "B") from the center of the stock screw. The goal is to make a hole that goes through the side skirt and through the sheetmetal behind it. (sheetmetal indicated in FIGURE 6)

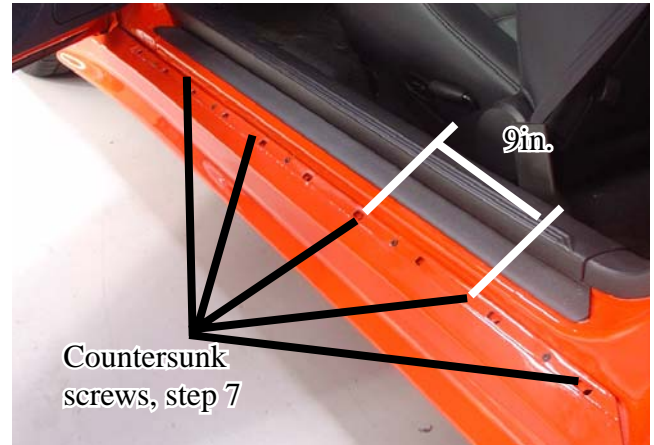


FIGURE 4

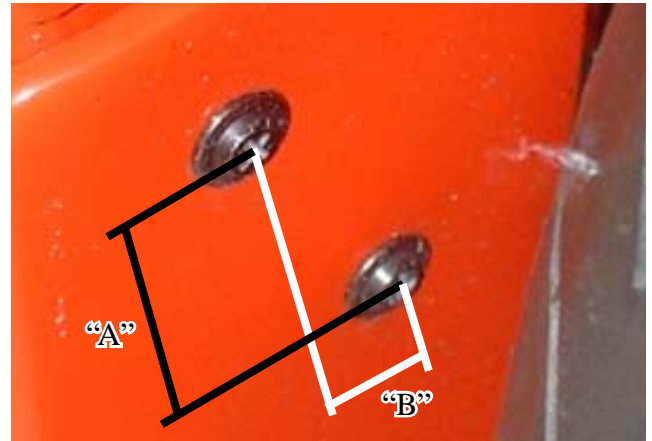


FIGURE 5



10. Repeat step 9, but drill a hole approximately 1.25" down ("A") and 1.25" in ("B") from the center of the stock screw and the rear end of the side skirt. Repeat this and step 9 on both side skirts, and insert a #8 screw into both holes of both ends of both side skirts.

11. Starting from the inboard side of the pinchweld, insert drill with 9/64" bit into the stock holes, and drill holes out through the side skirt. You may have to expand the holes for the plastic plugs to fit. Repeat on both sides of the car. (Four of the five plug locations indicated in FIGURE 7).

12. Insert five stock plastic fasteners so they point inboard. Repeat on both sides of the car. (four plugs indicated in FIGURE 7)

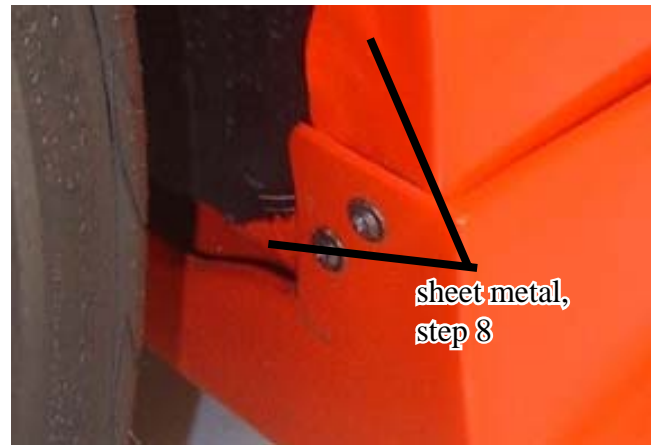


FIGURE 6



FIGURE 7