



SALEEN BODY KIT INSTALLATION 1994-1998 MUSTANG

PART# 10-8002-C14234A

SALEEN

Saleen Performance, Inc. 1225 East Maple Rd. Troy, MI 48083 248-743-4800
www.saleen.com



***IF YOU ARE NOT EXPERIENCED IN THE
AREA OF AUTOMOTIVE MECHANICS,
WE STRONGLY URGE THAT YOU REFER
THIS INSTALLATION TO A CERTIFIED
INSTALLER OR TECHNICIAN***



Thank you for purchasing the Saleen body kit for the 1994-98 Mustang. We appreciate your business, and we hope you enjoy the kit.

PLEASE READ the instructions on the following pages completely and thoroughly before attempting to install any of the body pieces. Many of the calls we have received on our technical assistance line could easily have been solved by a full read of the following instructions.

Before installing or painting any of the body pieces, be sure to test fit them on your car. They will fit snugly and securely once fastened, but any issues must be addressed before paint and prep work are completed.

Also, be sure to keep all stock hardware, as much of it will be reused.

Again, thank you for choosing Saleen, and enjoy the kit!



I Front Fascia Replacement

Obtain the following tools:

1/8 inch punch

drill

1/4 and 9/16 inch drill bits

#1 and #2 Philips head screwdrivers

7/16 inch socket, 1/4 inch drive

1/4 inch drive ratchet

Order of Operations:

NOTE: All stock attachments are shown in Figure 3

1. Remove the screws from the front half of the front wheel wells, and remove the screws connecting the underside of the front fascia to the botto-front of the wheel well liners. (Figure 1)

2. Pull the wheel well liner out from behind the lip of the front fascia, and unscrew the nuts securing the front fascia to the brackets, using the 7/16" socket and 1/4" ratchet.

3. Unscrew the plastic fasteners holding the radiator cover in place.

4. Drill out the rivets holding the top of the fascia in place, and remove the stock fascia. (Figure 2)

5. Drill out the rivets holding the side brackets to the fascia, then reattach brackets to the car with the stock nuts.

6. If the vehicle is equipped with fog lights, unplug the connector and unfasten the fog lights and remove them. Seal off any open electrical connections. Remove

6. Attach the screens to the inside of the front fascia using #4 size screws.

7. After test-fitting the front fascia and having it painted, place the Saleen front fascia over the front bumper.

8. Drill 1/8" holes at the top of the front fascia on either side of the grille, and fasten the top of the Saleen front fascia to the metal underneath using #8 size screws.

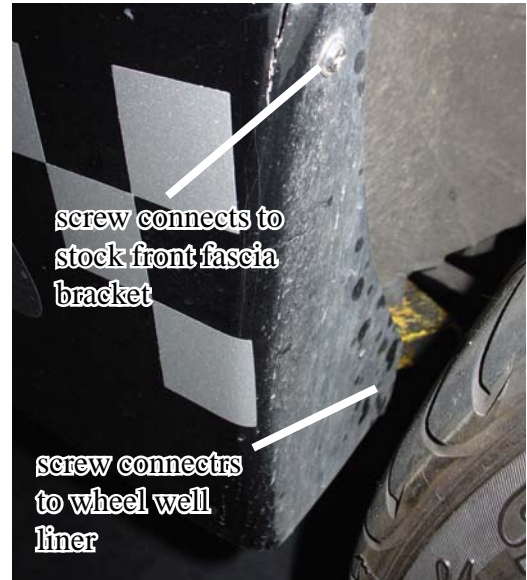


Figure 1



Figure 2

II Side Skirts Removal

Obtain the following tools:

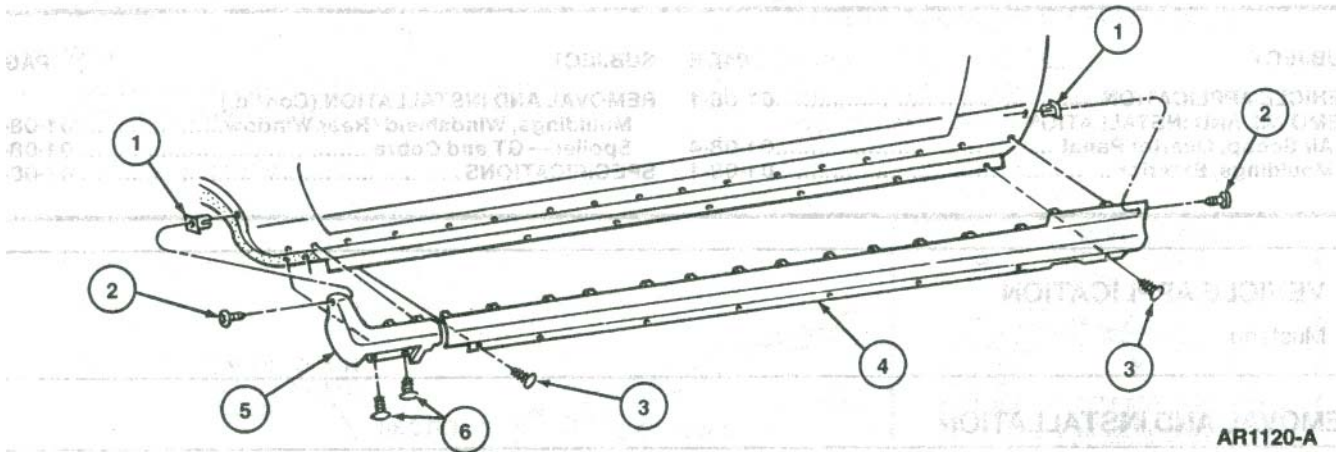
Philips head screwdriver

Panel puller

Order of Operations:

1. Remove the stock fasteners from both ends of the side skirts (see diagram in Figure 1 for all fastener locations).
2. Remove the plastic plugs that hold the bottom of the side skirt to the pinchweld underneath the car. (Figure 1)

Side Sill Exterior Moulding



| Item | Part Number | Description |
|------|-----------------------------|-----------------------|
| 1 | N806334-S | Nut (2 Req'd) |
| 2 | 56912-S100 | Screw (2 Req'd) |
| 3 | N807721-S | Pushpin (8 Req'd) |
| 4 | 6310154, LH/ 6310155, RH | Rocker Panel Moulding |

| Item | Part Number | Description |
|------|-------------------------------|---------------------------|
| 5 | 63100A52, LH/ 63100A53, RH | Rocker Panel Moulding Cap |
| 6 | 388577-S | Pushpin (2 Req'd For Cap) |

FIGURE 1

III Saleen Side Skirts & Door Cladding Preparation & Installation

Obtain the following tools:

80 grit sandpaper
wax and grease cleaner
3M automotive adhesion promoter
drill
9/64 inch bit
#2 Philips head screwdriver

Order of Operations:

1. After test-fitting the side skirts and door cladding pieces to the car, have them painted.
2. Sand the inside of the skirts and claddings to rough up the areas where the tape will go, then clean the areas with wax and grease cleaner. Ensure there is no paint overspray where tape will go. The tape area on the door cladding is the full raised perimeter of the inside of the part - the area on one end of the cladding is outline in white in Figure 2. The area on the skirts is the small raised area, several inches long, on each end of the skirt - one end is highlighted in Figure 3.
3. Apply 3M automotive adhesion promoter where the tape will go.
4. Put the tape onto the inside of the skirts and the door cladding, and press firmly onto the parts using the butt of the screwdriver or your thumb.
5. Line the side skirts up with the door, remove the backing from the tape, and press firmly into place.
6. Drill two 1/8" holes at either end of each side skirt as follows: line the top hole up with the stock nut insert (indicated by "1" in Figure 1 on the previous page) and make sure the bottom hole goes through the sheetmetal. Fasten the skirt at the top with the stock fastener, and at the bottom with a #8 size screw.



FIGURE 1



FIGURE 2



FIGURE 3



7. Drill one 9/64" hole about 1.5" from the front of the door sill (through the top of the side skirt) and another 1.5" from the rear of the door sill, then drill 3 evenly spaced holes in between. Fasten the side skirts onto the door sill using five #8 size screws.

8. Drill holes in the bottom of the side skirts to match existing holes in the pinchweld under the car, and fasten the side skirts using the stock plastic fasteners.

9. Line the door cladding up with the door, and open the door to ensure that there is adequate clearance up front.

10. Remove the backing from the tape on the door cladding, and press the door cladding firmly into place.

IV Rear Fascia Replacement

Obtain the following tools:

Drill

9/64 and 1/4 inch drill bits

#1 & #2 Philips head screwdrivers

7/16 inch deep socket, 1/4 inch drive

8 inch extension, 1/4 inch drive

1/4 inch drive ratchet

masking tape

rubberized undercoating (3M Body Shutz; 3M part # 051135-08864)

Order of Operations:

1. Remove the screws from the back of the rear wheel wells that hold the rear fascia in place.
2. Using screwdrivers and panel pullers, remove the plastic cover from around the trunk latch (Figure 1) and remove the plastic fasteners holding the trunk liners in place (Figures 1 & 2)
3. Using the 7/16" deep socket, unfasten the nuts - two per side and several in the middle/rear - that hold the rear fascia in place (Figures 3,4).



Figure 1



Figure 2

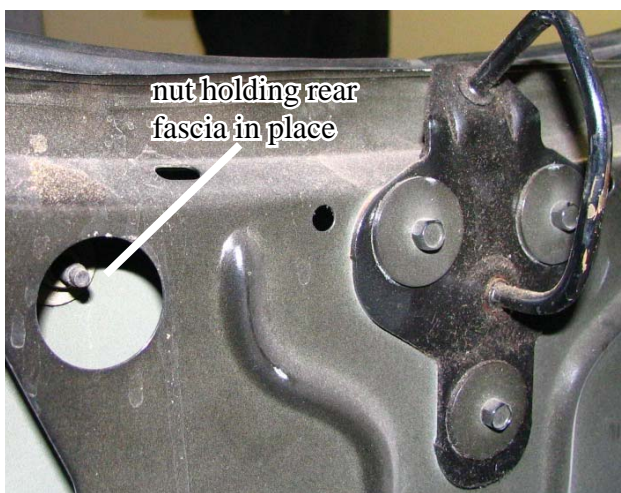


Figure 3



Figure 4

4. Remove the nuts holding both tail light assemblies in place, unplug the tail light connectors and remove both tail lights; set the lights in the trunk.

5. Remove the plastic pin from the bottom of the rear fascia.

6. Remove the rear fascia.

7. Drill out the rivets holding the stock brackets to the rear fascia.

8. Refasten all three brackets to the car using the stock nuts.

9. After the rear fascia has been test-fitted and painted, attach the screens to the inside of the vents using #4 size screws where indicated by black lines in Figure 5.

10. Where the under body work will be visible through the rear fascia screens, spray the under body with undercoating (3M Body Shutz; 3M part # 051135-08864) - be sure to cover the area of the body not to be sprayed using masking tape.

11. Put the Saleen rear fascia into place over the rear bumper. Slide the sides of the rear fascia into place between the stock fender brackets and the fenders/rear quarter panels.

12. Put the tail lights in as markers to help align the rear fascia. Then drill two 9/64 inch holes in the center (width-wise) of the fascia, inside the body line (close to the trunk), through the fascia and the center bracket; secure the fascia to the bracket with two #8 size screws. (Figure 7)

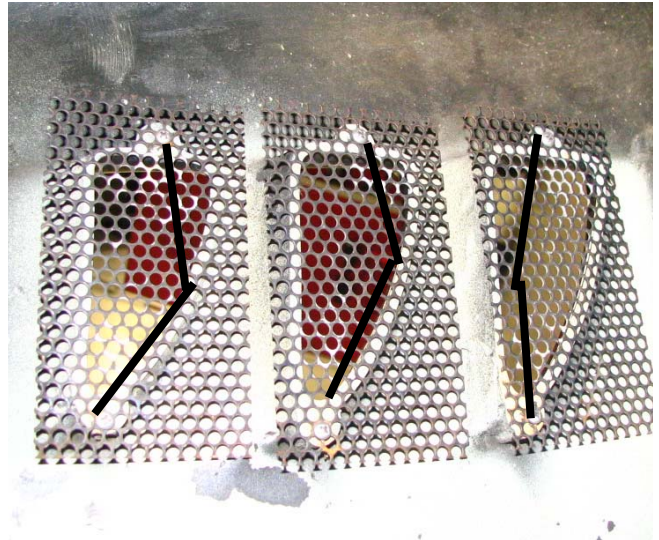


Figure 5

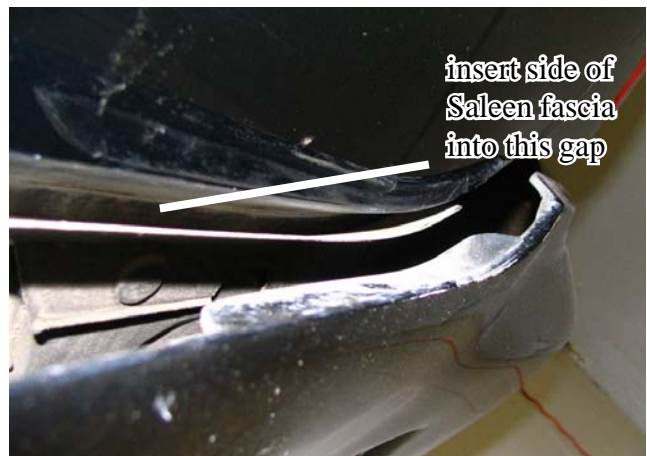


Figure 6

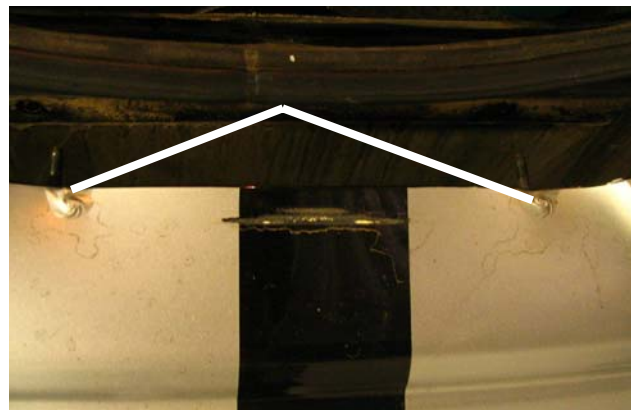


Figure 7

13. Remove the tail lights. Using a drill with a 9/64 inch bit, drill two holes through the rear fascia in the area that will tuck under each tail light and through the stock center bracket (Figure 8). Check the hole locations to ensure the screws will be hidden by the taillight when installed (Figure 9).

14. Tuck the wheel well liners into place inside the rear fascia, and fasten the rear fascia onto the body inside the rear wheel wells using the stock screws.

15. Replace the tail lights and secure with the stock nuts. Plug the connectors into the back of the tail lights.

16. Replace the trunk liners and the plastic piece that surround the trunk lid latch; fasten all pieces with stock hardware.

17. Under the car, find the two straps that help hold the gas tank up. Drill two holes in the bottom of the rear fascia (out of sight of the normal person's rear view of the car) next to each gas tank strap. Run a 14" zip tie through each gas tank strap and loop through each pair of freshly drilled holes and tighten the zip ties (Figures 10 & 11; the zip tie wraps around the strap on the opposite side of the fascia shown in Figure 10).



Figure 8



Figure 9

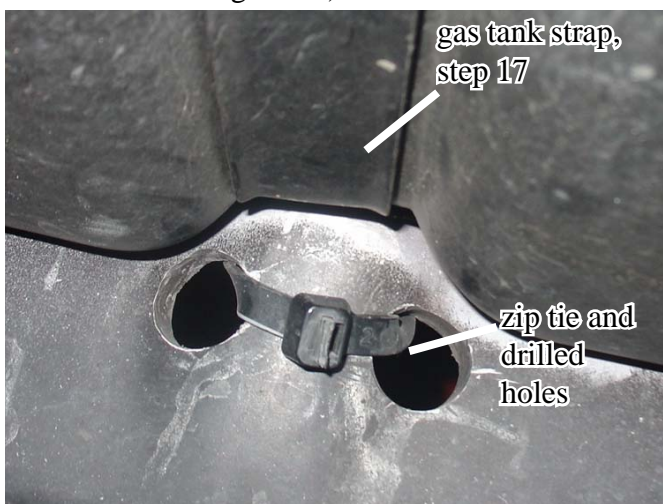


Figure 10



Figure 11