



SALEEN SIDE SCOOPS KIT 1999-2004 MUSTANG



PART# 10-8002-C14096A

SALEEN

Saleen Performance, Inc. 1225 East Maple Rd. Troy, MI 48063 248-743-4800
www.saleen.com



***IF YOU ARE NOT EXPERIENCED IN THE
AREA OF AUTOMOTIVE MECHANICS,
WE STRONGLY URGE THAT YOU REFER
THIS INSTALLATION TO A CERTIFIED
INSTALLER OR TECHNICIAN***

I Car Preparation

Obtain the following tools:

3M automotive adhesion promoter
wax and grease cleaner
T-50 Torx Socket
underbody spray (3M Body Shutz: 3M
part# 051135-08864)

Order of Operations:

1. Using a 1/4 in. drive extension, push in the tabs under the front of the rear seats; these tabs are several inches in from the edges of the seat bench. (Figure 1)
2. Remove the rear seat bench.
3. Pull up to remove the door sill trim piece.
4. Gently pry the plastic cover from the rear seat belt mount (Figure 2). Using a T-50 torx socket, unfasten the bolt holding the upper seatbelt mount in place and remove the upper seat belt mount; set it gently on the floor. (Figure 3)



Figure 1



Figure 2



Figure 3

5. Remove the rear seat upper/backing by removing the hard fasteners at the bottom (NOTE: for convertible models, you will also have to remove bolts from around the headrest and upper area behind the rear seat backs).

6. Using a panel puller, remove the three plastic plugs from next to the rear seat backs which hold the upper plastic trim piece in place (Figure 4).

7. Remove the plastic plugs attaching the front of the upper trim piece to the rear of the door sill.

8. Pry out the removable plastic piece on the coat hanger and unscrew the coat hanger from the plastic quarter window frame (Figure 5; coupe models only).

9. Remove all 3 plastic pieces (repeat the preceding steps on both sides of the car).

10. Optional: Using the T-50 torx socket, unfasten the bolt holding the lower seat belt mount in place. Remove the lower seat belt mount and the white plastic piece behind it. This is not necessary, but is done to grant easier access to the holes where the bolts will be inserted to fasten the scoops on.



Figure 4



Figure 5

11. Pull back the gray piece shown to expose a hole which will be used to access the holes for the bolts that secure the side scoops (Figure 6; coupe only).

11a. For a convertible, you will have to remove the speaker to access the opening from the previous step; then you will need to roll up the rear windows.

12. Grip the stock side scoops firmly and pull away from the car. Remove any excess adhesive and any remaining plastic fasteners after the scoop is pulled off. Remove any plastic fasteners remaining in the car.

13. Apply a piece of masking tape where shown by the outline in Figure 6 to cover holes in the stock car, then spray underbody coating (Saleen recommends 3M Body Shutz; 3M part # 051135-08864) over the tape to seal the area (you may wish to tape off the painted surfaces around this area to keep your car's body clean).



Figure 6

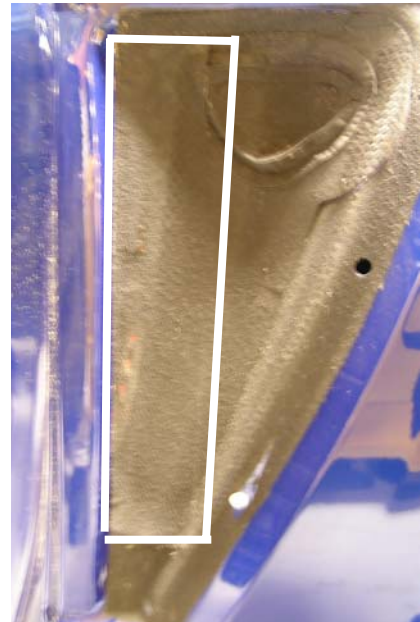


Figure 7

II Side Scoop Preparation

Obtain the following tools:

3M automotive adhesion promoter
80 grit sand paper
wax and grease cleaner

Order of Operations:

1. After verifying the fitment of the side scoops on your Mustang, have the side scoops painted.
2. Using 80 grit sandpaper, rough up the areas indicated by white lines in Figure 2 (Figure 2 shows the inside of the scoop - the side which will mount against the body).
3. Clean the area thoroughly using wax and grease cleaner, then wipe completely dry.
4. Apply 3M automotive adhesion promoter to the areas where the tape will go.
4. Apply two layers of double sided tape where indicated by white lines in Figure 2. The outer edge of the tape should touch the white edge marked in Figure 1, but should not go over it - this ensures the tape offers a secure fit of the scoop to the car while keeping the tape out of site once the installation is finished.

NOTE: no tape should be visible either through the vents or around the outside of the side scoop when installed.

5. Attach the screens to the inside of the scoops using the provided #4 size screws.



FIGURE 1



FIGURE 9

III Scoops Installation

Obtain the following tools:

3M automotive adhesion promoter
2 in. wide masking tape
9/64 inch Alan wrench
wax and grease cleaner

Order of Operations:

1. Clean the bodywork where the scoops will be installed using wax and grease cleaner.
2. Apply 3M automotive adhesion promoter to the area of the body where the tape on the side scoops will attach.
3. Thread the capscrews (00-9001-C03211*) into the threaded inserts in the side scoops, then remove the backing from the tape.

NOTE: On a convertible, you will need to make sure that the rear windows are rolled up.

4. Slide the capscrews through the holes in the external bodywork and press the side scoop firmly into place. Press the scoop against the bodywork for a few seconds to ensure a good bond with the tape. (Figure 1; Figure 2 shows the view from the interior, with the capscrew socket heads poking through the holes).

5. Remove the capscrews from the side scoop; use the holes you gained access to in steps 10 and/or 11 of section I.

6. Place a washer (00-9004-C04973*) over each capscrew and thread the capscrews firmly into the sidescoop - tighten with a 9/64 inch Alan wrench.

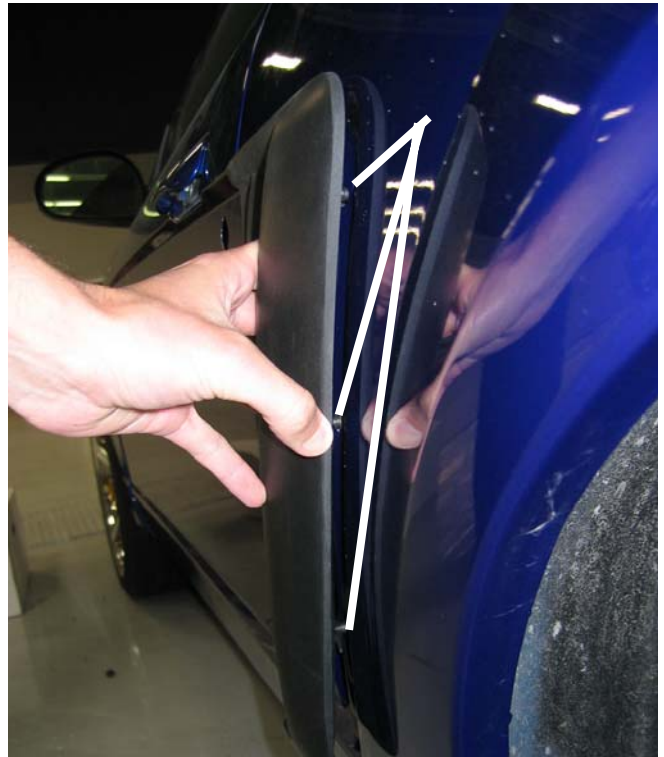
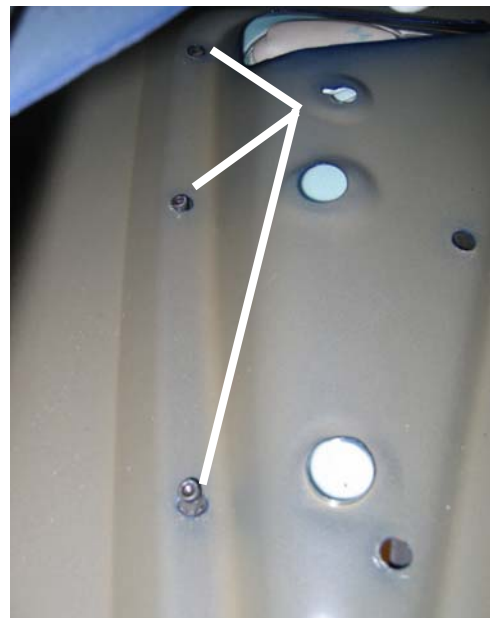


FIGURE 1





7. Reapply the white plastic piece that goes behind the lower seatbelt mount, if removed. Replace the lower seatbelt mount and secure using the stock bolt and T-50 torx socket; **torque to 35 ft-lbs.**

8. On a coupe model, replace the gray plastic piece by pressing firmly against the inner bodywork (on a convertible, resecure the speaker on each side).

9. Replace the three stock trim pieces with the stock plastic fasteners.

10. Fasten the coat hanger onto the quarter window frame with the stock screw

11. Replace the upper seatbelt anchor using the stock bolt and the T-50 torx socket; **torque to 35 ft-lbs.**

12. Reinstall the rear seat uppers.

13. Put the rear seat bench into position, and feed the seat belt receptacles up through the holes in the bench, and fasten in the seatbelts.

14. Lock the rear seat bench in to place.

15. Replace the door sill trim piece.