

SALEEN

A U T O S P O R T



SALEEN COMPANY CONTACT INFORMATION LIST

In order to better serve your needs, we have provided a list of employees and their job functions. We hope that this will make it even easier to get the information you need, when you need it. Any of the people listed below will be happy to assist you with your car purchases, inquiries, shipping information etc.

SALEEN PERFORMANCE

1827 Ximeno Ave. #310
Long Beach, CA 90806
(310) 424 - 8065

Contacts:

John Kirschner	Outside Sales
Stan Berry	Dealer Orders/Inquiries
James Moore	Warranty Claims
Mark Roth	Shipping/Receiving Information
Eryn Moore	Accounts Receivable
Kevin Driskel	General Manager

SALEEN PERFORMANCE PARTS

3080 29th st.
Long Beach, CA 90806
(800) 888 - 8945

SALEEN SUPPORT SERVICES

Team Saleen - Publishes the Fastlane quarterly newsletter; provides Saleen historical and authenticating vehicle information. Saleen Owner Registry and merchandising materials for national and international members.

Liz Summar - Director

1186 S. Diamond Bar Blvd. Suite 169
Diamond Bar, CA 91765
(714) 860 - 3424

Saleen Owners and Enthusiasts Club - A nationwide membership organization supporting and promoting the Saleen vehicles, their owners and history. They have numerous car shows, newsletters and special events for Saleen owners year 'round.

John McCauley - President

P.O. Box 1079
Sterling, VA 22170
(703)444-2535



SALEEN MUSTANG

BROCHURE AND SPECIFICATIONS



1993 SALEEN MUSTANG

FEATURES AND SPECIFICATIONS

RACECRAFT SUSPENSION

- Racecraft progressive rate front/rear coil springs - New for 1993
- Saleen Racecraft gas front struts - New for 1993
- Special strut mounting bushings
- Saleen Racecraft gas rear shocks - New for 1993
- Saleen Racecraft quad shocks - New for 1993
- Saleen urethane sway bar pivot bushings
- Saleen 5-spoke alloy wheels - New for 1993
 - Front: 17" x 8" Rear: 17" x 9"
- High Performance B.F. Goodrich Comp T/A Z-rated tires - New for 1993
 - Front: P225/45ZR17 Rear: P235/45ZR17
- Saleen High Performance alignment and tuned chassis

PERFORMANCE ENHANCEMENTS

- Four-wheel disc brakes/Racecraft brakes
- 5-lug bolt pattern
- 3-point powder coated strut tower brace - New for 1993
- G-load brace
- Racecraft sub-frame connectors
- Hurst quick ratio shifter
- Optional: Saleen/Vortech Polished Supercharger, 325+ H.P. - New for 1993 (EPA certified 50 states)

AIR MANAGEMENT DESIGN

- Saleen competition design rear wing - New for 1993
- Saleen Edition urethane front air dam - New for 1993
- Saleen Edition urethane side skirts
- Saleen Edition urethane rear valance
- Front bumper molding

Specifications subject to change without notice.



STYLING AND INTERIOR

- 170 MPH Saleen speedometer
- Electronic Saleen tachometer
- Leather-covered shift knob
- Pioneer cassette/radio/6 speakers and clock - New for 1993
- Pioneer graphic equalizer
- Saleen Edition sports seats by Recaro - New for 1993
- Saleen Edition rear seats and matching door panels
- Saleen front and rear floor mats
- Saleen windshield tint band
- Saleen Mustang design graphics/accent stripes - New for 1993
- Serialization number, front bumper
- Serialization console plaque, etched metal finish
- Saleen Mustang owner's jacket
- Saleen Championship Wreath
- Special 10 Year Production Badge

COLOR COMBINATIONS

- Black/Silver graphics
- Black/Gold graphics
- White/Blue graphics
- White/Silver graphics
- White/Gold graphics
- Bright Red/Silver graphics
- Bright Red/Gold graphics
- Calypso Green/Silver graphics

Specifications subject to change without notice.



SALEEN MUSTANG SC

BROCHURE AND SPECIFICATIONS



1993 SALEEN MUSTANG SC

FEATURES AND SPECIFICATIONS

ENGINE

- 5.0-liter EFI H.O. motor
- Saleen/Vortech Polished Supercharger - New for 1993
- Saleen/big valve heads - New for 1993
- 77 mm Saleen mass air flow sensor
- 65 mm throttle body
- Saleen cast upper and lower intake manifolds
- Saleen/SVO 1.7 rocker arms
- Saleen/SC-designed ceramic coated headers - New for 1993
- Saleen low restriction exhaust system
- High performance air filter
- Champion H.O.T. plugs
- Saleen high performance spark plug wires - New for 1993
- Saleen high performance 3-core radiator
- Polished aluminum valve covers
- High volume fuel pump - New for 1993
- Saleen Performance computer chip - New for 1993
- EPA-Certified in all 50 States

RACECRAFT SUSPENSION

- Racecraft progressive rate front/rear coil springs - New for 1993
- Saleen Racecraft front struts - New for 1993
- Special strut mounting bushings
- Saleen Racecraft gas rear shocks - New for 1993
- Saleen Racecraft quad shocks - New for 1993
- Saleen urethane sway bar pivot bushings
- Saleen EuroStyle 5-spoke alloy wheels - New for 1993
Front: 17" x 8" Rear: 17" x 9"
- High performance B.F. Goodrich Comp T/A
Z-rated tires - New for 1993
Front: P225/45ZR17 Rear: P255/40ZR17
- Saleen high performance alignment and tuned chassis

Specifications subject to change without notice.



PERFORMANCE ENHANCEMENTS

- Saleen/Brembo front wheel disc brake calipers/cross-drilled rotors - **New for 1993**
- Saleen Racecraft rear disc brakes
- 5-lug bolt pattern
- 3-point powder coated strut tower brace - **New for 1993**
- G-load brace
- Racecraft sub-frame connectors
- Saleen high torque close ratio 5 speed transmission - **New for 1993**
- Auburn gear traction loc cone clutch differential
- Final drive ratio: 3:55

AIR MANAGEMENT DESIGN

- Saleen competition design rear wing
- Saleen Edition urethane front air dam
- Saleen Edition urethane side skirts
- Saleen Edition urethane rear valance
- Saleen light weight composite hood - **New for 1993**
- Front bumper molding

STYLING AND INTERIOR MODIFICATIONS

- Special SC 200 MPH Saleen speedometer
- Electronic Saleen tachometer
- Leather-covered shift knob
- Pioneer cassette/radio with 6 speakers and clock - **New for 1993**
- Saleen Edition interior with matching rear seats and door panels by Recaro - **New for 1993**
- Saleen front and rear floor mats
- SC limited edition serialization
- Serialization console plaque, etched metal finish
- Saleen windshield tint band
- SC design graphics/accent stripes - **New for 1993**
- Saleen Mustang owner's jacket
- Saleen Championship Wreath
- Special 10 Year Production Badge

Specifications subject to change without notice.



COLOR OPTIONS

- Black/Silver SC graphics
- White/Blue SC graphics
- Bright Red/Silver SC graphics
- Calypso Green/Silver graphics

Specifications subject to change without notice.



OPTIONS
FOR

SALEEN
MUSTANG
&
SALEEN
MUSTANG SC



SPECIAL APPOINTMENTS and OPTIONAL EQUIPMENT

■ **ENGINE UPGRADE (Standard Model Only)**

SALEEN VORTECH SUPERCHARGER and HEADER SYSTEM

A high flow gear driven, polished supercharger and header system that increases horsepower to more than 325 H.P. This option is for the person who demands performance superiority. Also included is a high flow fuel pump and enhanced electronics.

SUGGESTED RETAIL: \$3,350.00*

*Consumer may be subject to Gas Guzzler Tax.

■ **ELECTRONIC UPGRADES**

PIONEER COMPACT DISC/RADIO STEREO SYSTEM

Super tuner series: quartz electronic tuner, 24-station preset, best station memory, two times over sampling, 6-speaker system with equalizer.

SUGGESTED RETAIL: \$545.00

■ **SALEEN REMOTE-MOUNTED RADAR DETECTOR**

Saleen 3R with 3-Band protection, latest technological development; image rejection technology (RT) provides the 3R with Kz protection.

SUGGESTED RETAIL: \$580.00



■ **INTERIOR UPGRADE**

SALEEN LEATHER INTERIOR PACKAGE

Hand-tailored interior, crafted in quality leather. Seats, door panels, head rests covered in the finest leather available. Each front seat has Saleen identification custom crafted into the bolster. Color options are black or two-tone grey.

SUGGESTED RETAIL: \$2,200.00

■ **PERFORMANCE UPGRADES**

COCKPIT ADJUSTABLE SUSPENSION

Three-way driver-activated. Saleen electronic adjustable suspension to adapt to changing driving conditions.

SUGGESTED RETAIL: \$1,200.00

TRACTION LOC DIFFERENTIAL/3:55 RATIO

Performance 3:55 axle ratio increases 1/4-mile acceleration.

SUGGESTED RETAIL: \$838.00

INTERNAL CHASSIS SUPPORT (2-Point)

Additional support for strengthening of overall chassis. Reduce body flex and twist.

SUGGESTED RETAIL: \$395.00



SPYDER PACKAGE™

Transforms your Saleen Convertible into a 2 seater roadster.
Package includes 2 point Saleen lite bar, and tonneau cover.
Available only as a package. Rear vision is impaired.

SUGGESTED RETAIL: \$945.00

SALEEN REAR WIND SCREEN

Compliments the Spyder Package™ by decreasing wind noise and turbulence within the cockpit.

SUGGESTED RETAIL: \$250.00

■ **EXTERIOR COLOR UPGRADE**

Any factory available paint color other than standard Saleen paint color(s) is available at this price.

SUGGESTED RETAIL: \$838.00

Prices subject to change without notice.



GT SPORT BROCHURE AND SPECIFICATIONS



1993 SALEEN GT SPORT

FEATURES AND SPECIFICATIONS

SPECIFICATIONS

- Distinct 16 x 7 inch Saleen alloy wheels
- B.F. Goodrich Comp T/A Unidirectional tires
P225/50ZR/16
- Saleen Racecraft struts and shocks
- Special strut mounting bushings
- Racecraft Linear Rate Front and Rear Coil Springs
- Saleen urethane sway bar pivot bushings
- Saleen High Performance alignment and tuned chassis
- Hurst quick ratio shifter
- Saleen GT rear wing
- Saleen leather grained shift knob
- GT Sport decals

Specifications subject to change without notice.



PERFORMANCE COMPARISONS

**MANUFACTURERS SUGGESTED
RETAIL PRICING**

FREIGHT POLICY

WARRANTY POLICY AND INFORMATION

ORDERING INFORMATION



SALEEN COMPARES

MODEL	0 - 60 (SEC.)	1/4 MILE (SEC.)	LAT. ACCEL.	SUGGESTED RETAIL
CHEVROLET / Camaro Z28	6.5	15.0	.89	\$22,478.00
CHEVROLET / Corvette L98	6.2	14.8	.91	37,389.00
DODGE / Stealth Turbo	6.0	14.5	.86	30,534.00
NISSAN / 300 ZX	7.1	15.5	.88	27,000.00
PONTIAC / Trans Am GTA	6.2	14.7	.89	26,000.00
PORSCHE / 944	7.5	15.7	.85	38,000.00
TOYOTA / MR2	6.2	14.7	.86	25,000.00
TOYOTA / Supra Turbo	6.6	15.2	.83	30,000.00
FORD / SALEEN MUSTANG	6.2	14.7	.90	26,790.00
W / Supercharger	5.8	13.8	.90	29,990.00

MODEL	0 - 60 (SEC.)	1/4 MILE (SEC.)	LAT. ACCEL.	SUGGESTED RETAIL
ACURA / NSX	5.7	14.0	.90	59,000.00
BMW / M-5	6.4	15.0	.80	59,655.00
CHEVROLET / Corvette ZR-1	4.9	13.4	.92	52,000.00
LAMBORGHINI / Diablo	4.5	13.3	.91	239,000.00
LEXUS / SC400	6.8	15.1	.88	39,200.00
MAZDA / RX-7	5.5	14.0	.94	35,000.00
NISSAN / 300ZX Turbo	6.5	15.0	.91	35,000.00
PORSCHE / Carrera 2	5.4	14.0	.85	60,400.00
FORD / SALEEN MUSTANG SC	4.8	12.9	.91	\$39,990.00





MANUFACTURERS SUGGESTED RETAIL PRICE - 1993 SALEEN MUSTANG

Saleen Mustang Coupe	\$26,790.00
Saleen Mustang Hatchback	\$27,490.00
Saleen Mustang Convertible	\$31,690.00
Saleen Mustang SC Hatchback	\$39,990.00
Saleen Mustang SC Convertible	\$44,990.00

All vehicles are fully equipped 5.0 LX Mustangs. They include cruise control, power windows, power door locks, air conditioning and rear window defogger.

Above prices do not include any options, freight or dealer preparation.

1993 SALEEN MUSTANG OPTIONS

Vortech supercharger/ ceramic coated header system (Standard on Saleen SC model)	\$3,350.00
Pioneer CD Stereo System	\$545.00
Radar Detector	\$580.00
Recaro Leather Interior	\$2,200.00
Cockpit Adjustable Suspension	\$1,200.00
3.55:1 Differential (Standard on SC model)	\$838.00
Internal Chassis Support (2 point)	\$395.00
Spyder Package; converts vehicle to a two seat roadster Includes light bar and tonneau cover (available for convertible models only)	\$945.00
Rear Windscreen (For Spyder equipped vehicles only) (Insert for light bar, greatly reduces wind turbulence)	\$250.00
Exterior Color Upgrade	\$838.00



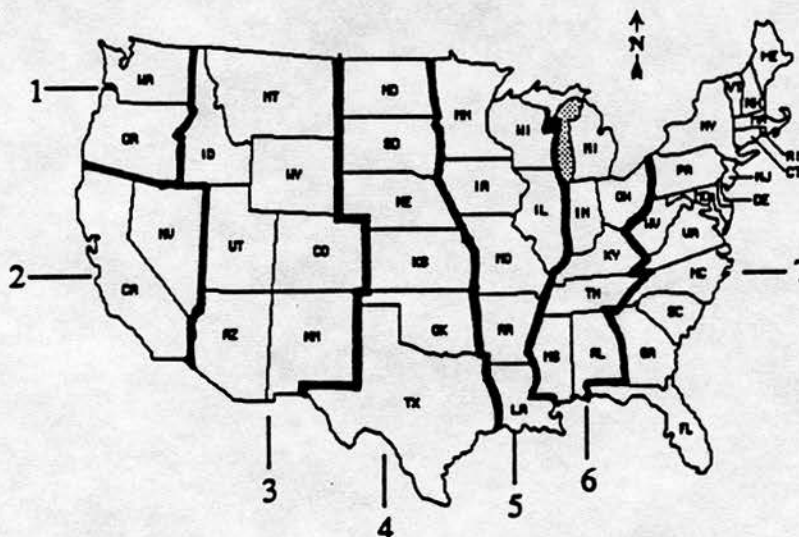
SALEEN PERFORMANCE
1827 Ximeno Ave.
Suite 310
Long Beach, CA 90815
(310) 424-8065
Fax: (714) 988-1802



FREIGHT

Shipment of your Saleen Mustang is accomplished using the following:

DELIVERY ZONE MAP



DELIVERY CHARGE PER ZONE PER CAR

ZONE	1	\$375.00
ZONE	2	\$200.00
ZONE	3	\$300.00
ZONE	4	\$325.00
ZONE	5	\$350.00
ZONE	6	\$400.00
ZONE	7	\$450.00
ZONE	8	\$475.00

Hawaii, Alaska

Vehicle delivered to Long Beach/San Pedro Port

ZONE 9 Call for Quote

Canada, Mexico

Vehicle delivered to nearest border crossing point

ZONE 10 Call for Quote

Puerto Rico, Bahamas, U.S. Virgin Islands

Vehicle delivered to Miami Port

All cars are shipped via a fully enclosed and insured trailer direct from the Saleen manufacturing facility to the ordering dealership or designated location.



1993 SALEEN VEHICLES

WARRANTY POLICY AND PROCEDURES INFORMATION

The Warranties in effect on each Saleen Vehicle are as follows:

- Ford Motor Company New Car Warranty, in effect on all unaltered components.
- Third party Vendors Extended Warranty. See attached list.
- Saleen Vehicle Warranty is effective for 12 months or 12,000 miles, whichever comes first. Effective from date of service, **INCLUDING DEMO SERVICE.**

Ford Motor Company's New Car Warranty is the primary warranty on the 1993 Saleen Vehicle. All claims on the unaltered portions of the vehicle should be made to Ford Motor Company in accordance with approved warranty and policy procedures.

The Saleen competition wing, air dam, side skirts and rear valance as well as all decals are warranted to be in deliverable condition when the vehicle is delivered to the Dealership. Due to the exposure of these parts, it is not warranted beyond the delivery inspection. Any warranty claim on the above mentioned parts **MUST** be noted with driver of the transport company **AND** called into Saleen Warranty Department by the **NEXT BUSINESS DAY.**

All claims relating to Saleen Vehicle Conversion as installed by Saleen Performance **MUST RECEIVE PRIOR APPROVAL** before repairs or replacement commence.

To facilitate "Hassle Free" handling of these claims, Saleen Performance has put in place the following warranty procedure. Consideration for Warranty approval may be received by calling the following number:

**SALEEN PERFORMANCE
WARRANTY DEPARTMENT
(310) 424-8065**



YOU WILL NEED TO HAVE THE FOLLOWING INFORMATION WHEN YOU CALL:

**FORD VEHICLE IDENTIFICATION NUMBER (VIN)
SALEEN CAR NUMBER
MILEAGE
IN SERVICE DATE**

Saleen Performance personnel will discuss the problem with you and determine the appropriate course of action. You'll be given a verbal authorization for approved repairs and subsequently issue a written warranty authorization. The Warranty Authorization Number must be on all invoices and repair orders to be validated and paid. All deliveries should be made during normal business hours and a signed delivery receipt obtained from Dealership personnel. Please ensure each Saleen Vehicle received at your dealership is properly inspected at the time of receipt, and that any damage is noted on the delivery receipt.

ANY TRANSPORTATION CLAIMS SHOULD BE DIRECTED TO THE CARRIER.

For out of warranty or general parts ordering, please call Saleen Performance Parts at 1-800-888-8945.

Note:

Ford Motor Company vehicle, parts and Saleen parts warranties are voided if the vehicle or parts is used for enclosed course competition or racing applications; or if they fail as a result of modifications.



SAMPLE OWNERS PACKET

MORONI

OWNER LETTER

REGISTRATION/JACKET FORM

OPERATING INSTRUCTIONS



POWER IN THE HANDS OF A FEW.

OWNERS AND ENTHUSIASTS CLUB

STANDARD EQUIPMENT

VEHICLE DESCRIPTION

1992 5.0L 2-DR SEDAN
4-PASSENGER SPECIALTY
5.0L EFI HO V-8 ENGINE
5-SPEED MANUAL O/D TRANS

SALEEN SERIAL NO:

EXTERIOR

INTERIOR

VIN:

1992 5.0L 2-DR SEDAN
4-PASSENGER SPECIALTY
5.0L EFI HO V-8 ENGINE
5-SPEED MANUAL O/D TRANS

- 5.0L EFI HO 8-CYL. ENGINE
- EEC-IV COMPUTERIZED ENGINE CONTROLS
- 5-SPEED MANUAL OVERDRIVE TRANSMISSION
- POWER RACK-AND-PINION STEERING W/15:1 RATIO
- TRACTION-LOCK AXLE
- SPORT TUNED DUAL EXHAUSTS
- CONSOLE WITH ARM REST
- LUXURY SOUND INSULATION
- TINTED GLASS
- LEATHER-WRAPPED STRG. WHEEL
- DUAL REM. CONTROL MIRRORS
- INTERVAL WINDSHIELD WIPERS
- LIGHT GROUP
- HEAVY DUTY BATTERY

- FULL INSTRUMENTATION
 - TACHOMETER
 - TEMPERATURE GAUGE
 - BATTERY VOLT METER
 - OIL PRESSURE GAUGE
 - TRIP ODOMETER
- ILLUMINATED VISOR MIRRORS
- SALEEN RACECRAFT SUSPENSION
 - PROGRESSIVE RATE FRONT AND REAR COIL SPRINGS
 - MONROE FORMULA GP STRUTS AND SHOCKS
 - QUADRA SHOCK REAR SUSPENSION
 - MONROE FORMULA GP AXLE DAMPER
 - URETHANE SWAY BAR PIVOT BUSHINGS

- SALEEN DESIGN
 - 5 SPOKE ALLOY WHEELS
 - 17 X 8 FRONT
 - 17 X 9 REAR
 - B. F. GOODRICH COMP T/A Z RATED TIRES
 - 225X45ZR17 235X45ZR17
 - HIGH PERFORMANCE ALIGNMENT AND TUNED CHASSIS
 - FOUR WHEEL SVO-TYPE DISC BRAKES 5. LUG BOLT PATTERN
 - STRUT TOWER BRACE, RACECRAFT CHASSIS BRACING
 - RACECRAFT SUBFRAME CONNECTORS
 - HURST QUICK RATIO SHIFTER
 - SALEEN AERODYNAMICS
 - COMPETITION DESIGN REAR WING, FRONT AIR DAM, SIDE SKIRTS AND REAR VALANCE

- 170 MPH SALEEN SPEEDOMETER
- LEATHER COVERED SHIFT KNOB
- PIONEER 6 SPEAKER AM/FM CASSETTE STEREO SYSTEM W/LOCK AND GRAPHIC EQUALIZER
- SALEEN EDITION RACECRAFT SPORT SEATS, WITH EMBROIDERED LOGO
- MATCHING REAR SEAT AND DOOR PANELS
- SALEEN CHAMPIONSHIP WREATH
- SALEEN MUSTANG GRAPHICS
- LIMITED EDITION SERIALIZATION
- FRONT BUMPER MOLDING
- SALEEN FLOOR MATS
- DRIVERS SIDE AIR BAG
- SUPPLEMENTAL RESTRAINT SYSTEM (SRS)

THE FEATURES LISTED BELOW ARE INCLUDED AT NO EXTRA CHARGE IN THE STANDARD VEHICLE PRICE SHOWN AT RIGHT:

Compare this vehicle to others in the FREE GAS MILEAGE GUIDE available at the dealer.



CITY MPG

17

HIGHWAY MPG

24

Actual Mileage will vary with options, driving conditions, driving habits, and vehicle's condition. Results reported to EPA indicate that the majority of vehicles with these estimates will achieve between

14 and 20 mpg in the city and between 20 and 28 mpg on the highway.

1992 SALEEN
5.0 Liter Engine (F.F.S.),
8 Cylinders, Fuel Injection
Catalyst
5-Speed Manual

Estimated Annual Fuel Cost: \$986.00

For Comparison Shopping,
all vehicles classified as
SUBCOMPACT CARS
have been issued
mileage ratings
ranging from

10 to 53 mpg in the city
and
14 to 58 mpg on the
highway.

PRICE INFORMATION

STANDARD VEHICLE PRICE

OPTIONAL EQUIPMENT

SPECIAL VALUE GROUP

*POWER EQUIPMENT GROUP

POWER LOCK GROUP

DUAL ELECTRIC REMOTE MIRRORS

POWER SIDE WINDOWS

*SPEED CONTROL

*CUSTOM EQUIPMENT GROUP

AIR CONDITIONING

FRONT LICENSE PLATE BRACKET

INC

INC

INC

INC

Manufacturer's
Suggested Retail Price

TOTAL

For added protection, all Ford models exceed federal bumper standards and are equipped with a 5-MPH front and rear bumper system at no charge.

SHIP THROUGH

SHIP TO IF OTHER THAN SOLD TO

VEHICLE IDENTIFICATION NO.

DEALER NO.

FINAL ASSEMBLY POINT

METHOD OF TRANSFER

ONE

TWO

THIS LABEL IS AFFIXED PURSUANT TO FEDERAL AUTOMOBILE INFORMATION DISCLOSURE ACT
GASOLINE, LICENSE AND TITLE FEES, STATE AND LOCAL TAXES AND DEALER-INSTALLED OPTIONS ARE NOT INCLUDED



Dear Saleen Mustang Owner;

Congratulations! You have just joined a select group of individuals that desire a high performance automobile that combines the best that Ford Motor Company can offer plus extra refinements that only Saleen can create. Also, the value of your Saleen Mustang is further enhanced by a limited edition production run each model year, which gives you your own serial number. That exclusive number is placed in key locations, and some secret places, to insure the authenticity of your Saleen Mustang.

When you purchase a Saleen Mustang, you are not just buying any car, you have an entire company standing behind you - - one with a legacy of developing fine automobiles. The Saleen Mustang is backed by a strong warranty and parts program and a racing heritage that has netted Saleen the coveted Manufacturer's trophy in SCCA's Escort Endurance Championship. That coupled with our ongoing promotional efforts show that Saleen is fully committed to bringing you the best in specialty manufactured automobiles. We have selected from among the finest manufacturers using only the best equipment available for our vehicles. We believe that you will be extremely satisfied with your Saleen Mustang.


The equipment found on your Saleen Mustang has been precision installed using the latest state-of-the-art equipment and hand assembled by our well trained staff. Our Long Beach, California facility handles both the production of your Saleen Mustang and our nationwide parts distribution network and Dealer support services. Your vehicle was completely detailed, waxed and then shipped via enclosed transporter to your dealership to insure the protection of your car. As you can see, we go that extra mile to make sure the Saleen Mustang you have ordered meets your satisfaction in every way. Your Saleen/Ford dealership share that goal.

We'd like you to fill out the enclosed survey and registration form and return it to our office. In exchange, we'll send you a Saleen Mustang jacket and information on products available from Saleen Performance Parts and club information from Team Saleen and the Saleen Owners and Enthusiasts Club.

Thank you for your investment in Saleen Performance. I believe it is one that will bring you long term gains - - both in terms of fun per mile and in the value of your Saleen Mustang. Should you have any questions regarding your vehicle's performance, please call one of our technicians at (310) 424-8065, or please drop me a line and let me know how your car is performing.

Again, thank you for buying a Saleen Mustang. I trust you will enjoy it. Best wishes.

Cordially,


Steve Saleen

SALEEN PERFORMANCE
1827 Ximeno Ave.
Suite 310
Long Beach, CA 90815
(310) 424-8065
Fax: (714) 988-1802



OWNER REGISTRATION AND SURVEY

DATE OF PURCHASE _____

Please take a few moments to fill out and return this questionnaire in the envelope provided. As an automotive enthusiast, we value your opinion and your input affects the way we market and produce future Saleen Mustangs. In exchange for your valuable information we'll send you a Saleen Jacket at no charge.

1. Name _____	2. Phone # _____
3. Address _____	4. Occupation _____
5. City _____	6. Education <input type="checkbox"/> HIGH SCHOOL <input type="checkbox"/> COLLEGE <input type="checkbox"/> POST GRAD
7. State/Zip _____	8. Annual Income <input type="checkbox"/> \$15-25,000 <input type="checkbox"/> \$26-35,000
9. Military Exp. _____	<input type="checkbox"/> \$36-45,000 <input type="checkbox"/> \$46-55,000
10. Age _____	11. Number of Children _____
	<input type="checkbox"/> \$56,000 +

12. Your Vin# _____

13. Car Purchased From (Dealer) _____ (State) _____

14. Salesperson _____ 15. Price (Less tax/license) _____

16. Was your car purchase handled professionally? ☐ Yes ☐ No

17. Comments _____

18. Best Features of the car: _____

19. Worst Features of the car: _____

20. What features would you like to see in future Saleen Mustangs? _____

21. Where did you first hear about the Saleen Mustang?

☐ Television ☐ Dealer ☐ Auto Show ☐ Friend ☐ Racetrack

☐ Newspaper ☐ Magazine (which one) _____

22. Why did you buy your Saleen Mustang? _____

23. For what purpose will you use your Saleen Mustang? ☐ Daily transport ☐ Weekend

☐ Rallies ☐ Autocross ☐ Club functions ☐ Shows ☐ Investment

24. What vehicles does the Saleen replace? (if any) _____

25. What other high performance autos have you owned? _____

26. What automotive magazines do you subscribe to? _____

non automotive? _____

27. What hobbies do you enjoy? _____

Thank you for your help. Your name and address will be forwarded to Team Saleen and the Saleen Owners and Enthusiasts Club (SOEC), you will be receiving information from them along with a Saleen Performance Parts catalog in the near future.

For Office Use Only	
Saleen Number	
MFG. Date	
Ext. Color	
Int. Color	
Body Style	

Choose Your Jacket

Additional jackets may be purchased for \$69.99 ea.
Be sure to enclose remittance payable to Saleen Performance.
Please add sales where applicable.

SM	MED	L	XL	COST
				N/C
CA. residents add 8.25% sales tax				
Total				



☐ Saleen

☐ SPP

☐ Team Saleen



SALEEN MUSTANG SPECIAL INSTRUCTIONS AND SPECIFICATIONS

IMPORTANT! PLEASE READ IMMEDIATELY!

RIDE HEIGHT

The ride height of the Saleen Mustang has been significantly lowered for better handling and less air resistance (drag). Consequently, **extra caution** should be taken to avoid hitting the front airdam on **all** driveways, cement parking stops, or any other steep inclines or curbing.

TIRE ROTATION

The wheels and tires on your Saleen Mustang are different sizes and dimensions. Rotation of tires and wheels can only be done from side to side providing that the tire is dismounted because they are unidirectional.

Front	Tire:	P225/45/17 ZR
	Wheel:	17 X 8"
Rear	Tire:	P235/45/17 ZR
	Wheel:	17 X 9"

MOUNTING SPECS.

If the occasion ever occurs that you need to change tires or use the space saver spare tire, you will find that a **special deep set socket** has been provided (taped to handle) to remove the Saleen wheels.

WHEELS & CARE

The wheels on your Saleen Mustang are a combination painted, clear coat and aluminum which need special care in cleaning. We recommend that to clean the wheels **use only mild soap and water or Eagle One "Factory Mag Special Finish (# C)"** for best results that will not scratch or dull your wheel finish. We also highly recommend Eagle One products for waxing and detailing your car.

BUSHINGS

Your rubber sway bar pivot bushings have been replaced with polyurethane material to give better handling and a faster reacting sway bar. Because of this material, it needs to be **consistently lubricated with white lithium grease** to avoid squeaking. Extra care should be given after prolonged exposure to water from rain or wet streets.

BRAKES

The Saleen Mustang comes equipped with an adjustable brake proportioning valve located in the engine compartment on the passenger side near the firewall. This device has been preset for optimum performance by the Saleen technicians and should **only be readjusted by a qualified brake specialist**.

REAR WING

The Saleen competition rear wing is made from DuPont's new Centrex material which is very strong and durable. However, it was designed as an aerodynamic aid and **should not be used as a handle** to open and close the trunk. For better results, please use the actual trunk lid under the wing for opening and closing.

SPECIFICATIONS

ALIGNMENT

Camber	negative 1 deg. (per wheel)
Caster	Stock (non-adjustable)
Toe	0-1/16" total toe in

TORQUE SPECS.

Front Strut	Top 75 ft. lbs.
	Bottom 165 ft. lbs.
Rear Trailing Arms	85 ft. lbs.
Wheels	75 ft. lbs.

RECOMMENDED OIL CHANGE

3,000mi.

Additional maintenance and operating information refer to Ford Owners' manual.



1993 SALEEN VEHICLES

WARRANTY POLICY AND PROCEDURES INFORMATION

The warranties in effect on each Saleen Vehicle are as follows:

- Ford Motor Company New Car Warranty, in effect on all unaltered components.
- Third party Vendors Extended Warranty. See attached list.
- Saleen Vehicle Warranty is effective for 12 months or 12,000 miles, whichever comes first. Effective from date of service, **including demo service.**

Ford Motor Company's New Car Warranty is the primary warranty on the 1993 Saleen Vehicle. All claims on the unaltered portions of the vehicle should be made in accordance with approved warranty and policy procedures.

All claims relating to Saleen Vehicle Conversion as installed by Saleen Performance **must receive prior approval** before repairs or replacement commence. It is **recommended** that you take the vehicle to an authorized Saleen Dealer for best service. However, for your convenience the vehicle may be taken to any Ford Dealer. The dealership personnel must notify Saleen Performance upon arrival. (number listed below):

**SALEEN PERFORMANCE
WARRANTY DEPARTMENT
(310) 424 - 8065**

You will need the following information when you (or the Dealership) call:

**FORD VEHICLE IDENTIFICATION NUMBER
SALEEN CAR NUMBER (YR-XXXX)
MILEAGE
IN SERVICE DATE (DATE VEHICLE SOLD AS NEW)**

Saleen Performance personnel will discuss the problem and determine the appropriate course of action. **All claims will be satisfied through the Ford Dealership.**

Special Note:

Ford Motor Company vehicle, parts and Saleen parts warranties are voided if the vehicle or parts is/are used for enclosed course competition or racing applications; or if they fail as a result of modifications.



TEAM SALEEN
&
SALEEN OWNERS
AND
ENTHUSIASTS CLUB
INFORMATION





AN INVITATION
TO EXCELLENCE...

As the competition knows, it's tough to keep up with Saleen. But you can now keep up with what TEAM SALEEN is doing by joining up and becoming a TEAM SALEEN Member! You'll become part of one of the most exciting automotive programs going and growing. As a TEAM SALEEN Member you will receive these exclusive benefits:

Four quarterly issues of the official TEAM SALEEN newsletter
FAST LANE.

Special discount purchase opportunities on parts and
accessories.

Special TEAM SALEEN Jacket - available only with Membership.

TEAM SALEEN Mylar Decal.

Saleen/Champion SCORCHER Mustang Race Poster - fast becoming
a collectors item.

1992 B.F. Goodrich Calendar featuring the 1992 Saleen SC

For Saleen Owners, Mustang enthusiasts and all Ford performance
car owners - all of these terrific items are yours for only
\$69.99.

We look forward to our relationship as Members of TEAM SALEEN!

Liz Summar
TEAM SALEEN Acting Director

Please note our new telephone number: 714-860-3424



86 S. Diamond Bar Blvd.
Suite 169
Diamond Bar, CA 91765



(909) 860-3424





MEMBERSHIP APPLICATION

Yes! I want to become a member of **TEAM SALEEN**! Enclosed is my \$69.99 (U.S. funds only) for my first years membership. It is my understanding that the annual renewal is just \$39.99 and is due in the month of my membership anniversary. Spouse membership is available at \$48.99 (a 30% discount) and includes an additional Membership Card, Decal and Jacket. Annual renewal for the Spouse is \$10.00.

Please send my **TEAM SALEEN** package to:

NAME: _____
(Last) (First) (Middle Init.)

SPOUSE: _____
(Last) (First) (Middle Init.)

ADDRESS: _____

CITY: _____, STATE _____ ZIP _____

Telephone No. Home: _____
Bus.: _____
Fax : _____

If you are a current Saleen Mustang or Sport Truck owner - Yr. ____ No. _____

Otherwise, make and model of performance car driven

MAKE: _____
MODEL: _____
YEAR: _____

Choose your Special Team Saleen Jacket.	SM	MED	LRG	XLRG
Your Jacket Selection				
Spouse Jacket Selection				

Thank You, and congratulations as a new **TEAM SALEEN** Member. We hope to see you at a future race.



36 S. Diamond Bar Blvd.
Suite 169
Diamond Bar, CA 91765



(909) 860-3424



LET'S GO SALEENING !

SOEC INVITES YOU TO JOIN OUR CLUB

WHO ARE WE?

We are Saleen Owners and Enthusiasts in the United States and Canada.

WHAT ARE THE CLUB'S GOALS?

Our primary goal is to enjoy our Saleens. This enjoyment will come in many forms as the members share meetings, car shows, track events, going to races, as well as any other legal activity Saleen enthusiasts can dream up.

WHAT IS SOEC'S RELATIONSHIP TO THE SALEEN ORGANIZATIONS ?

We have been officially named by Steve Saleen as the Owners & Enthusiasts organization for his vehicles. We worked hard to achieve this recognition and intend to work hard in the future to have a good working relationship with all of the Saleen organizations. We plan to hold 5 Regional Meets in each of the upcoming years which will include Steve Saleen's attendance.

WHAT BENEFITS SHOULD I EXPECT FROM SOEC?

Our membership includes decals, a membership card, and a quarterly newsletter. We mailed our first newsletter at the end of January, 1993. You will know, in advance, of all of the club's events. Wherever possible, we will arrange for discount event pricing. We have established a discount for members with Saleen Performance Parts. We are investigating additional vendors who will offer club members a discounted price. Look at our calendar below for our upcoming plans.

DO I HAVE TO OWN A SALEEN TO JOIN?

No. We are for **OWNERS and ENTHUSIASTS!** Not just for Owners.

WHAT ARE THE DUES?

Membership dues are \$25.00 per year and are renewable every twelve months after the month you join.

HOW DO I JOIN?

Remove this insert, fill out the application on the back, and mail it, with your dues, to **SOEC** at the address below.

If you have any questions, please call **SOEC** at the number below.

SOEC 1993 EVENT CALENDAR - TENTATIVE!!!

JANUARY						
S	M	T	W	T	F	S
					1	2
3	4	5	6	7	8	9
10	11	12	13	14	15	16
17	18	19	20	21	22	23
24	25	26	27	28	29	30
31						

FEBRUARY						
S	M	T	W	T	F	S
	1	2	3	4	5	6
7	8	9	10	11	12	13
14	15	16	17	18	19	20
21	22	23	24	25	26	27
28						

MARCH						
S	M	T	W	T	F	S
	1	2	3	4	5	6
7	8	9	10	11	12	13
14	15	16	17	18	19	20
21	22	23	24	25	26	27
28	29	30	31			

APRIL						
S	M	T	W	T	F	S
					1	2
3	4	5	6	7	8	9
10	11	12	13	14	15	16
17	18	19	20	21	22	23
24	25	26	27	28	29	30

MAY						
S	M	T	W	T	F	S
						1
2	3	4	5	6	7	8
9	10	11	12	13	14	15
16	17	18	19	20	21	22
23	24	25	26	27	28	29
30	31					

JUNE						
S	M	T	W	T	F	S
		1	2	3	4	5
6	7	8	9	10	11	12
13	14	15	16	17	18	19
20	21	22	23	24	25	26
27	28	29	30			

JULY						
S	M	T	W	T	F	S
					1	2
3	4	5	6	7	8	9
10	11	12	13	14	15	16
17	18	19	20	21	22	23
24	25	26	27	28	29	30
31						

AUGUST						
S	M	T	W	T	F	S
1	2	3	4	5	6	7
8	9	10	11	12	13	14
15	16	17	18	19	20	21
22	23	24	25	26	27	28
29	30	31				

SEPTEMBER						
S	M	T	W	T	F	S
					1	2
3	4	5	6	7	8	9
10	11	12	13	14	15	16
17	18	19	20	21	22	23
24	25	26	27	28	29	30

OCTOBER						
S	M	T	W	T	F	S
						1
2	3	4	5	6	7	8
9	10	11	12	13	14	15
16	17	18	19	20	21	22
23	24	25	26	27	28	29
30	31					

NOVEMBER						
S	M	T	W	T	F	S
	1	2	3	4	5	6
7	8	9	10	11	12	13
14	15	16	17	18	19	20
21	22	23	24	25	26	27
28	29	30				

DECEMBER						
S	M	T	W	T	F	S
					1	2
3	4	5	6	7	8	9
10	11	12	13	14	15	16
17	18	19	20	21	22	23
24	25	26	27	28	29	30
31						

MARCH 26, 27:	MCA NATIONAL - GULF COAST REGIONAL MUSTANG CLUB PENSACOLA, FL
APRIL 3, 4:	COLUMBUS SPRING SWAP OHIO STATE FAIRGROUNDS COLUMBUS, OH
APRIL 10, 11:	KNOTTS BERRY FARM CAR SHOW BUENA PARK, CA SOEC SOUTHWEST REGIONAL MEET
MAY 9:	SCCA PRO - SERIES WORLD CHALLENGE CUP RACE ROAD ATLANTA, GA
MAY 21, 22:	MCA NATIONAL - CENTRAL ARKANSAS MUSTANG CLUB LITTLE ROCK, AR
MAY 23:	SCCA PRO - SERIES WORLD CHALLENGE CUP RACE COLUMBUS, OHIO
JUNE 12, 13:	MCA NATIONAL - TRI-STATE MUSTANG CLUB CINCINNATI, OHIO SOEC CENTRAL REGIONAL MEET
JUNE 19:	SCCA PRO - SERIES WORLD CHALLENGE CUP RACE MOSPORT, CANADA
JUNE 26, 27:	FORD MOTORSPORT NATIONALS MAPLE GROVE RACEWAY MAPLE GROVE, PA SOEC NORTHEAST REGIONAL MEET

JULY 4:	SCCA PRO - SERIES WORLD CHALLENGE CUP RACE SEARS POINT, CALIFORNIA
JULY 11:	SCCA PRO - SERIES WORLD CHALLENGE CUP RACE DES MOINES, IOWA
JULY 16, 17:	MCA NATIONAL - SHILOH VALLEY MUSTANG CLUB BELLEVILLE, ILLINOIS
JULY 24:	SCCA PRO - SERIES WORLD CHALLENGE CUP RACE LIME ROCK, CONN
AUGUST 21:	SCCA PRO - SERIES WORLD CHALLENGE CUP RACE ROAD AMERICA, WISC
SEPTEMBER 3, 4, 5:	MCA GRAND NATIONAL FOOTHILLS MUSTANG CLUB GREENVILLE, SC SOEC SOUTHEAST REGIONAL MEET
SEPTEMBER 18, 19:	SHELBY CLUB MEET AT PIR PORTLAND INT'L RACEWAY PORTLAND, OR SOEC NORTHWEST REGIONAL MEET
SEPTEMBER 18:	SCCA PRO - SERIES WORLD CHALLENGE CUP RACE DALLAS, TEXAS
OCTOBER 1, 2, 3:	MCA NATIONAL - TENNESSEE VALLEY MUSTANG CLUB OAK RIDGE, TENN



THIS INFORMATION IS FOR CLUB USE ONLY AND IS CONFIDENTIAL TO THE CLUB

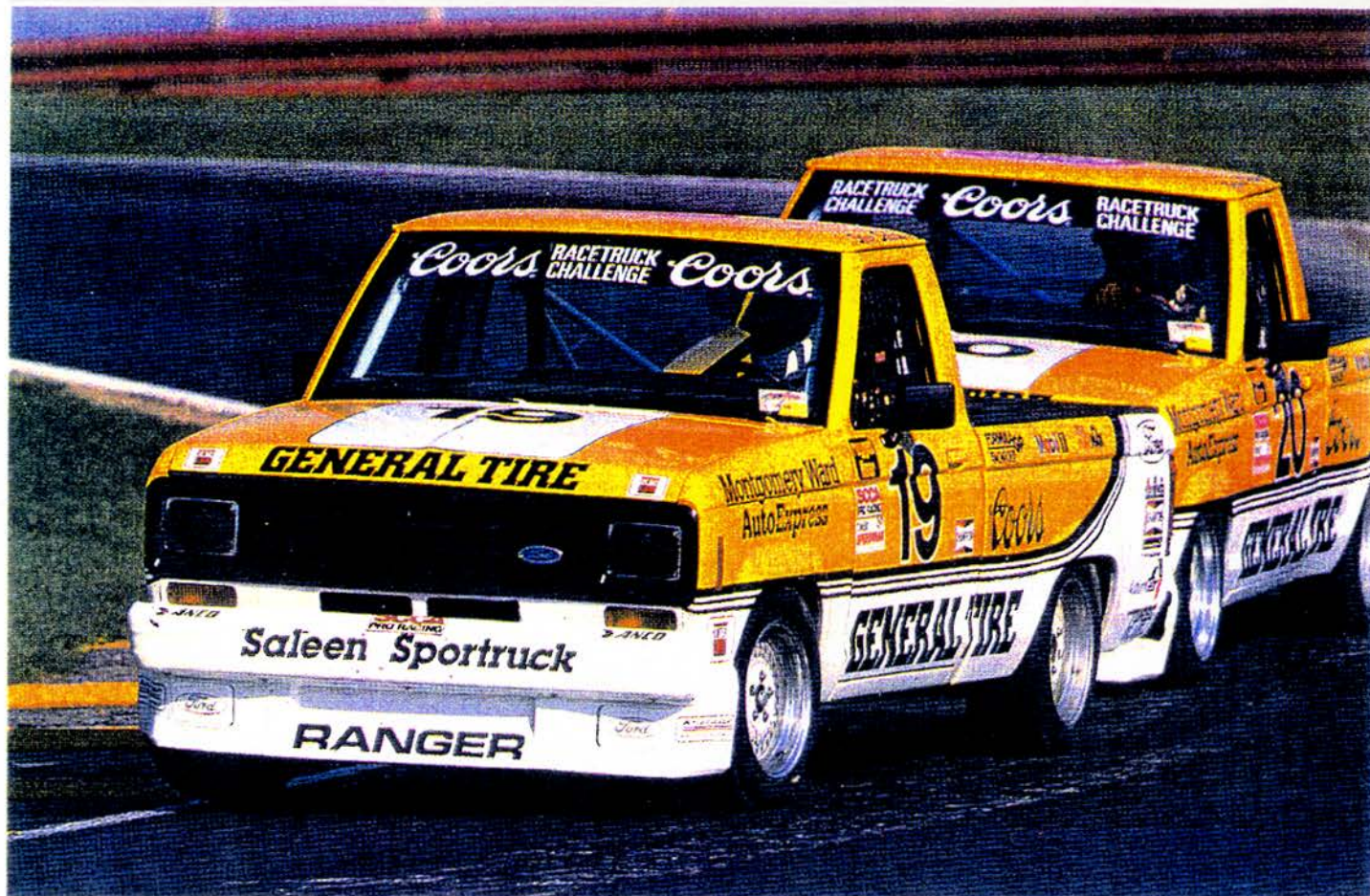


THE COMPANY
&
RACING HERITAGE

1993 RACING SCHEDULE







The Ford Rangers of Steve Saleen and George Follmer, on their way to a one, two finish at Mid-Ohio.

The Ford Rangers that finished first and second. For the second year in a row.

For the second year in a row, more than twenty compact trucks took to the track at Mid-Ohio for the Coors Racetruck Challenge.

For the second year in a row, only two of them were Ford Rangers.

And for the second year in a row, after fifty miles of racing on Mid-Ohio's twisting road course, the Ford Rangers finished first. And second.

Which left Toyota, Nissan, Mitsubishi, Jeep and Dodge fighting for third place.

The winning combination that took Steve Saleen and George Follmer to the top finishing positions was the Ford Ranger's 2.3 liter

Electronically Fuel Injected 4-cylinder engine, teamed with a manual 5-speed overdrive transmission, and Twin I-Beam suspension.

It was a combination that proved to be too tough for the Ford Ranger's foreign and domestic competition.

And except for some racing modifications, the Ford Rangers that fared so well at Mid-Ohio are based on the Ranger you can order from your Ford Dealer.

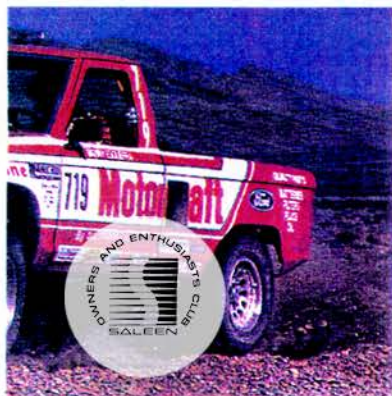
Ford Ranger.

It's the truck that left its competition in the middle of Ohio fighting for third place. For the second year in a row.



Racing into the future.





Ranger STX Regular Cab in Bright Red. Some equipment shown is optional

Note: The specially modified racing vehicles shown here are operated by professional drivers in sanctioned competition





1993 SCCA WORLD CHALLENGE SCHEDULE

<u>DATE</u>	<u>EVENT</u>
MAY 8	ROAD ATLANTA
MAY 22	COLUMBUS GRAND PRIX
JUNE 20	MOSPORT PARK
JULY 3	SEARS POINT INTERNATIONAL RACEWAY
JULY 10	DES MOINES GRAND PRIX
JULY 24	LIME ROCK PARK
AUGUST 14/15	TROIS-RIVIERES
AUGUST 21/22	ROAD AMERICA
SEPTEMBER 18	DALLAS GRAND PRIX

NOTE: PRO RACING RESERVES THE RIGHT TO CHANGE VENUES OR DATES AS IT DEEMS NECESSARY.

02/16/93/MBS

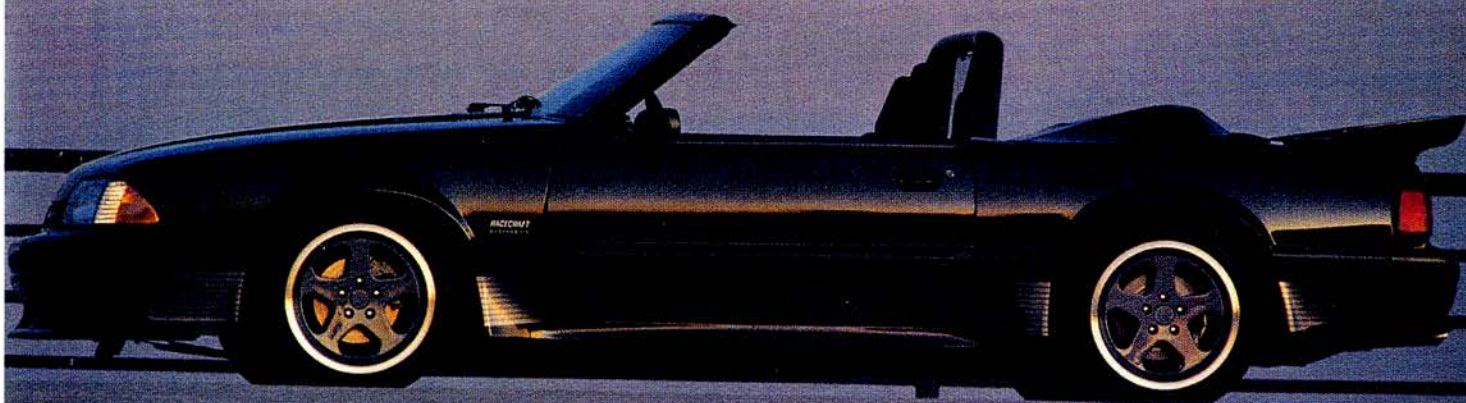


ADVERTISING
CURRENT
&
PAST

AD SLICKS



THE SALEEN MUSTANG.



WHEN YOU GET SERIOUS ABOUT PERFORMANCE.



Sure, everybody talks performance. But when you get past the prose and into the cars nobody delivers, right? Wrong. The 1993 Limited Edition Saleen Mustang delivers. What you see is what you get: a true high performance automobile. A strong race-proven machine that's made more trips to the victory circle of the SCCA/Escort Endurance Series in previous years than any other GT class competitor.

The Saleen Mustang boasts stunning looks and a luxurious, but disciplined interior that beckons you to enter. New for '93: 17" alloys, Vortech supercharger and Recaro seats. This is one serious machine, ready for just a few. Contact one of our exclusive dealers listed below or call 310/424-8065.

McCarville Ford Mike McCarville/Steve Destase 2606 Middle Country Road Centereach, NY 11720 516/588-1800 Fax 516/588-1707	Pelican Ford Keith Cargill 707 S. Washington Boulevard Sarasota, FL 34236 813/366-5230 Fax 813/955-5934	Burch Ford Phil Hubbard 201 N. Harbor Lahabra, CA 90631 310/691-3225 Fax 310/690-5115	Winner Ford Al Stevens 303 E. Cleveland Avenue Newark, DE 19711 302/738-0800 Fax 302/738-3983	John Bleakley Ford Bob Winiarczyk 870 Thornton Road Lithia Springs, GA 30057 404/941-9000 Fax 404/941-0409
Dayton Ford Mike Childs Route 130 Dayton South Brunswick, NJ 08810 908/329-2900 Fax 908/329-0543	Fremont Ford Bob Sherwood 39700 Balentine Drive Newark, CA 94560 510/651-5600 Fax 510/651-8101	Madera Ford Don Fahrney 200 Madera Avenue Madera, CA 93637 209/264-9723 Fax 209/674-0290	Young Ford Richard Young, Sr. 5411 N. Tyson Street Charlotte, NC 28213 1-800-258-0065 Fax 704/596-2904	Danielson Ford Charlie Englert 455 Providence Pike Brooklyn, CT 06234 203/774-8577 Fax 203/774-4151

Intended solely for an elite group of enthusiasts, the Saleen Mustang redefines the concept of a total performance automobile. In addition to power levels associated with race cars, this remarkable vehicle provides refined handling, ergonomics and styling. The end result? Simply the best performance value per dollar available anywhere!



Performance • 1827 Ximino Avenue • Suite 310 • Long Beach, CA 90801



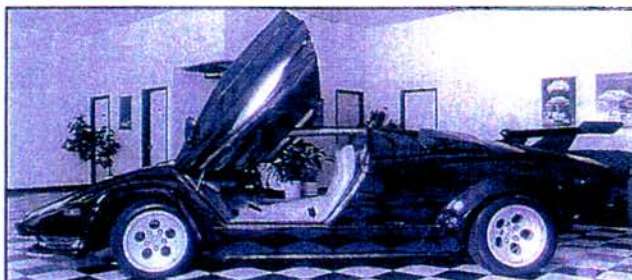
1990 LOTUS ESPRIT SE Produces 260 HP and powers to 60 MPH in 4.7 seconds. Now available in the Hamptons on Eastern Long Island. Also available for immediate delivery: unusual 1990 SE in British Racing Green. Ask about our "Hamptons Weekend Delivery." Contact Tom Thek or David Campbell at Carriage Chrysler, Dodge, Lotus. 516-283-5300 or FAX 516-283-5364. (Similar to Photo)



1972 PANTERA Numbers match. 52,000 miles, older restoration with 15 coats flawless metallic red lacquer, perfect original black interior, extra chrome goodies, professionally balanced and blueprinted 351C, Weber carbs, big bore headers, rotary A/C, oil cooler, Mallory ignition, cube headlights. Always garaged, an updated Pantera with great investment potential. \$40,000 or best CASH offer. 407-639-5670, Richard Duncan.



1991 LAMBORGHINI DIABLO Now taking orders for this exciting automobile. 412-687-6700. LAMBORGHINI OF PITTSBURGH. AUTHORIZED LAMBORGHINI DEALER.



1983 LAMBORGHINI COUNTACH 5000 S Black with Tan leather interior. 21,000 kilometers, carbureted, rear wing. Major service just performed. Excellent condition. Offered at \$135,000. Contact Prestige Motorcar Gallery, Tallahassee, FL. 904-576-4661.

THE SALEEN



WHEN YOU GET SERIOUS





THE 1990 365/GTB4 SPYDER This exotic reproduction is carefully handcrafted to meet the most demanding enthusiasts. The interior is tailored using the finest leathers and wools. Advanced American technology for reliability and performance and European styling make this car a dream come true. European style interior and seats make it a true reproduction of the legendary 365 Spyder. Have one built to your specifications starting at \$39,990. Send \$15.00 U.S. for info, package, pictures and a Spyder T-Shirt to Miami Spyder, Inc., 1384 Bennett Drive #194, Longwood, FL 32750. For more information, call TOLL FREE 1-800-753-0000. Outside U.S. 407-260-0801. FAX 407-260-1032.

MUSTANG.



ABOUT PERFORMANCE.

FRANK COLLETTO FORD

Harbor City, CA
Mike Amani 213-325-9220

CIENER/WOODS FORD

Kernersville, NC
Ed Woods 919-996-3700

S&C FORD

San Francisco, CA
Russ Willett 415-861-6000

BILL PIERRE FORD

Seattle, WA
Don Gillis 206-364-2200

SUBURBAN FORD

Sacramento, CA
Ken Okenquist 916-331-7600

DAYTON FORD

South Brunswick, NJ
Mike Childs 201-329-2900

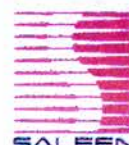
YOUNG FORD

Charlotte, NC
Richard Young 704-598-2599

DANIELSON FORD

Brooklyn, CT
Charlie Englert 203-774-8577

*Suggested retail price \$25,990.00



**POWER IN
THE HANDS
OF THE
OWNER.**
SALEEN SPORT
SALEEN LOCATING SERVICE
Suite 1190
Anaheim, CA 92806

714-939-0323

SALEEN

M U S T A N G



Exclusive East Coast Dealers



MAIN STREET FORD

David Thomson
1022-1040 Main Street
Waltham, MA 01724
617-894-8000
FAX 617-893-6707

DAYTON FORD

Mike Childs
Route 130 Dayton
South Brunswick, NJ 08810
201-329-2900
FAX 201-329-0543

For more
information call

MCCARVILLE FORD

Steve Destase/Mike McCarville
2606 Middle Country Road
Centereach, NY 11720
516-588-1800
FAX 516-588-1707

VANDERSTYNE FORD

Jay Vanderstyn
4545 Ridge Road West
Rochester, NY 14626
716-352-1200
FAX 716-352-9657

SALEEN AUTOSPORT

2400 E. Katella, Suite 1190
Anaheim, CA 92806
714-939-0323

MCCAFFERTY FORD

Andy Larson
Route 1 Woodbourne Road
Langhorne, PA 19047
215-945-8000
FAX 215-945-0258

WINNER FORD

Bill White/Al Stevens
303 E. Cleveland Avenue
Newark, DE 19711
302-738-0800
FAX 302-738-3983

SUN STATE FORD

Bill Sidhu
3535 West Colonial Drive
Orlando, FL 32808
407-299-5900
FAX 407-293-8100

JOHN BLEAKLEY FORD

Bob Winiarczyk
870 Thornton Road
Lithia Springs, GA 30057
404-941-9000
FAX 404-941-0409

YOUNG FORD

Richard Young, Sr.
5411 N. Tryon Street
Charlotte, NC 28213
704-598-2599

MILLBURY FORD/MERCURY

Frank Nadel
780 Washington Street
Auburn, MA 01501
508-832-6261
FAX 508-757-7655

DANIELSON FORD

Charlie Englert
455 Providence Pike
Brooklyn, CT 06234
203-774-8577
FAX 203-774-4151

POWER IN THE HANDS OF A FEW.

THE LIMITED EDITION SALEEN MUSTANG



SALEEN

A U T O S P O R T



Exclusive West Coast Dealers

DAMEROW FORD

Randy Francis/Dave Freeza
12325 S.W. Canyon Road
Beaverton, OR 97005
503-644-1131
FAX 503-526-5406



NORTH CENTRAL FORD

Neal Harrison
1819 N. Central Expressway
Richardson, TX 75080-0908
214-231-3491
FAX 214-238-4359



S & C FORD

Russ Willett
2001 Market Street
San Francisco, CA 94114
415-861-6000
FAX 415-431-4954

BILL PIERRE FORD

Don Gillis
P.O. Box 27165
Seattle, WA 98125
206-364-2200
FAX 206-775-5399



SUBURBAN FORD

Ken Okenquist
4625 Madison Avenue
Sacramento, CA 95841
916-331-7600
FAX 916-349-3393



GALPIN FORD

Tawny Arnaud
15505 Roscoe Blvd.
Sepulveda, CA 91343
818-787-3800
1-800-733-7080



THEODORE ROBINS FORD

Ron Dace
2060 Harbor Blvd.
Costa Mesa, CA 92627
714-642-0010



BOB BEATY FORD

Mike Nolan
2440 First St.
Simi Valley, CA 93065
805-583-0333

Intended solely for an elite group of enthusiasts, the Saleen Mustang redefines the concept of a total performance automobile. In addition to power levels associated with race cars, this remarkable vehicle provides refined handling, ergonomics and styling. The end result? Simply the best performance value per dollar available anywhere!



THE CENTRAL SOURCE OF POWER.

North Central Ford in Richardson is the exclusive source for performance sports cars like the Limited Edition Saleen Mustang! It's also your sports center for new power models like the Ford Thunderbird Super Coupe and Probe GT.

No other dealer offers you such wide selection or dependable service after the sale like North Central Ford.

That's why we've received the "Super Star" award four consecutive years for having achieved the highest customer satisfaction rating among all Metro Ford dealerships.

Plan a visit for a test drive soon. And put the power of North Central in the palm of your hand.



THE LIMITED EDITION SALEEN MUSTANG. EXCLUSIVELY AT NORTH CENTRAL FORD IN RICHARDSON.

*Recipient of the
"Super Star" award
from Ford Motor
Company*



The unique sound under the hood means there's something very special about the Thunderbird Super Coupe!

A genuine performance vehicle, the Saleen Mustang has been created from your automobile wish list! Wide, low stance; slight rake; race-designed wing; side skirts, front spoiler, and 170 MPH speedometer. It's a unique machine that has earned its reputation on the race tracks of America.



Probe performance reaches its full potential in the Probe GT.



NORTH CENTRAL FORD

RICHARDSON

214-231-3491

NORTH CENTRAL EXPRESSWAY AT CAMPBELL ROAD.



THE SALEEN MUSTANG.



WHEN YOU GET SERIOUS ABOUT PERFORMANCE.

Sure, everybody talks performance. But when you get past the prose and into the cars nobody delivers, right? Wrong. The 1989 Limited Edition Saleen Mustang delivers. What you see is what you get: a true high performance automobile.

A strong race-proven machine that's made more trips to the victory circle of the SCCA/Escort Endurance Series in the past three

years than any other GT class competitor.

The Saleen Mustang boasts stunning looks and a luxurious, but disciplined interior that beckons you to enter. This car is one

serious machine, ready for just a few. Call 1 (800) 999-5509 to get yours.



POWER IN THE HANDS OF A FEW™
SALEEN AUTOSPORT
4955 East Hunter Ave
Anaheim, CA 92807



SALEEN LOCATING SERVICE



SALEEN
MULTI-ANNO

JOHN
Bleakley
FORD

POWER IN THE HANDS OF A FORD

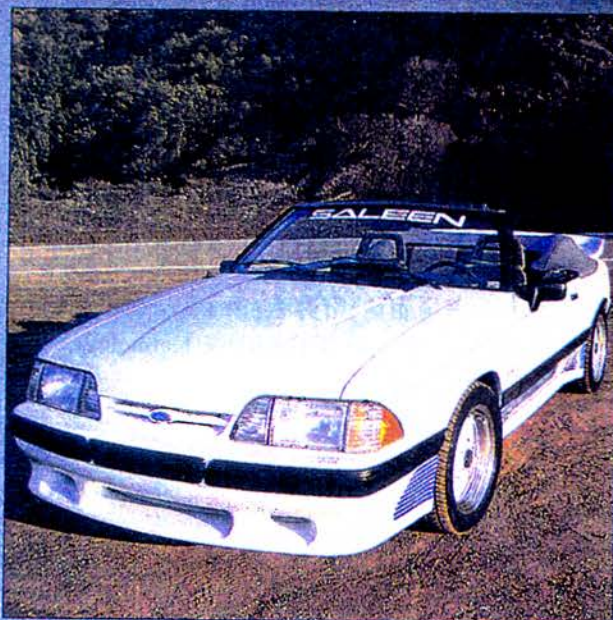


1-202-777-THORNTON

Outdoor Today



THE LIMITED EDITION SALEEN MUSTANG.



race cars, this remarkable vehicle provides refined handling, ergonomics and styling. The end result? Simply the best performance value per dollar available anywhere! See it today at Theodore Robins Ford, Orange County's performance car center since 1921.

POWER IN THE HANDS OF A FEW.

Intended solely for an elite group of enthusiasts, the Saleen Mustang redefines the concept of a total performance automobile. In addition to power levels associated with



THEODORE ROBINS

THE



STORE

2060 HARBOR BOULEVARD, COSTA MESA 714/642-0010



POWER IN THE HANDS OF A FEW.



THE LIMITED EDITION SALEEN MUSTANG.

We put the Saleen Mustang in the hands of a few automobile editors. Here's what they had to say. . . "Crank it up, and what you have is a car that'll blow just about everything off into the weeds."

—*Autoweek*. "Improved agility, a suspension that's firm but not excessively so, terrific ultimate grip and improved off-the-line acceleration." —*Road & Track*. "We think it's the best Mustang, if not pony car, a person can buy." —*Motor Trend*. Now, we'd like to get your impressions!

See this remarkable vehicle today at this selected Ford dealer.

POWER IN THE HANDS OF A FEW.



THE LIMITED EDITION SALEEN MUSTANG.

Intended solely for an elite group of enthusiasts, the Saleen Mustang redefines the concept of a total performance automobile. In addition to power levels associated with race cars, this remarkable vehicle provides refined handling, ergonomics and styling. The end result? Simply the best performance value per dollar available anywhere!

See it today at this selected Ford dealer.

POWER IN THE HANDS OF A FEW.



THE LIMITED EDITION SALEEN MUSTANG.

Intended solely for an elite group of enthusiasts, the Saleen Mustang redefines the concept of a total performance automobile. In addition to power levels associated with race cars, this remarkable vehicle provides refined handling, ergonomics and styling. The end result? Simply the best performance value per dollar available anywhere!

See it today at this selected Ford dealer.

POWER IN THE HANDS OF A FEW.



THE LIMITED EDITION SALEEN MUSTANG.

We put the Saleen Mustang in the hands of a few automobile editors. Here's what they had to say. . . "Crank it up, and what you have is a car that'll blow just about everything off into the weeds." —*Autoweek*. "Improved agility, a suspension that's firm but not excessively so, terrific ultimate grip and improved off-the-line acceleration." —*Road & Track*. "We think it's the best Mustang, if not pony car, a person can buy." —*Motor Trend*. Now, we'd like to get your impressions!

See this remarkable vehicle today at this selected Ford dealer.

POWER IN THE HANDS OF A FEW.

THE LIMITED EDITION SALEEN MUSTANG.



NEWSLETTER
&
PRESS RELEASES



Team



SALEEN Vol.1, No.1

The Team Saleen Newsletter

Winter 1993

The Fastlane

1993 SALEEN'S are SUPERcharged!



SALEEN MUSTANG & SALEEN SC

As we enter the 10th year of production, the 1993 model for Saleen brings with it some of the most exciting and dramatic features. Never one to stand still, Steve Saleen has designed a truly exclusive performance car for the nineties. He has also expanded, for the first time, the Saleen model line to four distinctive vehicles.

WHAT'S NEW The 1993 Saleen Mustang and Saleen Mustang SC have a new look and a new feel. They are equipped with a new Centrex material rear wing that promises to be both lighter and stronger than previous types. Some additional new features of these performance automobiles include revised rate progressive springs with all new Racecraft gas struts and shocks. They are also equipped with 17", 5 spoke alloys both front and rear. Interior accoutrements include Saleen Edition Recaro Sport seats and an

Options abound for Saleen Mustangs in 1993. One of the most unique packages we've yet seen is the new spyder option. It transforms the standard Saleen convertible into a two seat roadster. The conversion includes a removable soft tonneau and light bar assembly. Also available is a windscreen to reduce turbulence within the cockpit. It doesn't stop there, you can add over 100 horsepower to your Saleen Mustang or Saleen Spyder with the addition of our high flow centrifugal Saleen/Vortech supercharger and header package, and more easily avoid the result of all that extra power with a remote mounted radar detector. Revised cockpit adjustable shocks have been re-introduced for the 1993 model year and you can further upgrade your suspension with a two point internal chassis support. A leather interior option rounds out the interior.

From 'bumper to bumper' the Saleen Mustang and Saleen Mustang SC will continue to set the standards for the best "All American Made" performance car in the industry.



Pioneer cassette radio 6-speaker sound

1186 S. Diamond Bar Blvd. Suite



169, Diamond Bar, CA 91765



on pg. 5

FOR
IMMEDIATE
RELEASE



CONTACT: David Parcell
TMC
714-731-6273

SALEEN PRODUCTION HITS FULL SPEED

LONG BEACH, CALIFORNIA (May 5, 1993) -- Saleen Performance announces the availability of 1993 Saleen Mustangs at a network of Team Saleen Ford Dealers across the country. The '93 lineup includes the standard Saleen Mustang in Coupe, Hatchback and Convertible models. Each is available with a variety of options including the engine performance package consisting of the fully emissions certified Saleen Vortech Supercharger and ceramic coated headers. The ultimate Mustang is undoubtedly the Saleen SC which produces 450 horsepower and comes fully loaded with top-of-the-line suspension, brakes, wheels, tires and the full Saleen aerodynamic package. The Saleen SC, currently undergoing EPA certification, is expected at dealers this summer.

"These are absolutely the best Saleen Mustangs yet, states Steve Saleen, the championship race driver and driving force behind Saleen Performance. "Although we've experienced a couple of rough years, we have completed a reorganization, moved production back to Southern California where I can be more actively involved, and are again focused on building cars."

Although a customer can order a Saleen Mustang from any Ford dealer, there is a Team Saleen network of dealers who will stock the cars and have specially trained personnel on the sales and service of the cars. The Saleen dealer network will make a Saleen Mustang available for viewing and a test drive within a two hour drive of practically anywhere in the United States.

"It's important to understand that Saleen Mustangs are not an aftermarket tuner car, continued Steve. "They are in fact the only specially built, serialized performance cars available through an established dealer network in the U.S. Our performance enhancements are not emission exempt like many aftermarket parts, but are actually EPA certified, a much more stringent testing process required to sell cars through Ford dealers. Furthermore, our upgrades don't void Ford factory warranties".

(more)



SALEEN PERFORMANCE
1827 Ximeno Ave.
Suite 310
Long Beach, CA 90815
(310) 424-8065
Fax: (310) 988-1802



Saleen Mustangs were introduced in 1984. In 1986, Saleen won his first race in a Saleen Mustang prepared for the SCCA Escort Series program. 1987 saw the Saleen team dominate the series on the way to capturing all four championship titles: Driver; Team; Manufacturer; and Tire. The technology developed to produce championship winning cars for the track proved very appealing to customers in search of more performance from Ford's popular street car. Saleen's various Mustang oriented performance businesses experienced rapid growth through the 1980s, in part fueling the massive popularity that 5.0 liter Ford performance enjoys today.

Saleen Performance also announces the appointment of David Parcell as public relations representative for the organization. Parcell is responsible for media relations and coordination of all media related activities.

For more information contact: David Parcell, TMC, 4020 Birch Street, #203, Newport Beach, CA 92660 714-731-6273.

#



**SALEEN
RESALE
VALUE**



Value Guide to CARS of Particular Interest

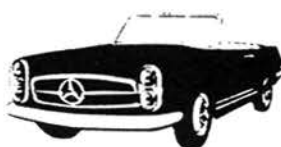
Domestic Cars



C

P

I



Imported Cars

April-May-June 1993

		LOW	HIGH	AVG
ROLLS-ROYCE				
1989	Silver Spirit	57700	68500	62900
	Silver Spur	59900	75000	67000
	Corniche Convertible	91000	117000	107000
1990	Silver Spur	75000	84500	79900
	Corniche Convertible	100000	128000	117000
ROVER				
1960-69	2000TC Sedan	2400	4475	3300
1960-73	Land Rover	4450	8475	6100
1970-71	3500S Sedan	2500	4875	3525
1980	3500 Sedan	2675	5050	3750
1982-85	Range Rover	8550	11200	9950
1986-87	Range Rover	10900	16500	14000
1988	Range Rover	14200	19700	16600
1989	Range Rover	16500	23000	20700
	Range Rover County	20600	24500	22000
1990	Range Rover	21000	28500	24800
	Range Rover County	22900	29500	26200
1991	Range Rover	24300	32000	28500
	Range Rover County	26500	33300	30000
SAAB				
1967-74	Sonett Coupe	2650	4500	3525
SALEEN MUSTANG				
Editors Note:				
The Saleen Mustang is a total performance package designed around upgrading the braking, handling, aerodynamics, and appearance of the standard Mustang model. Each car is numbered by order of its build for that model year. It is available in both hatchback and convertible bodystyles.				
1986	Hatchback	8000	10450	8800
1987	Hatchback	9125	11900	10000
1988	Hatchback	10400	14300	12250
1989	Hatchback	11750	16800	14100
	SSC	Recent Sale: 23500		



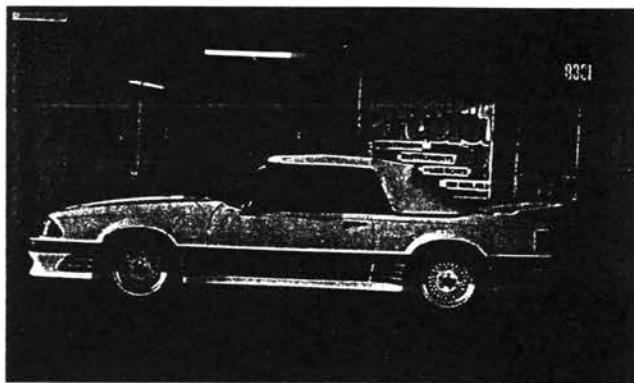
TRADING CARDS





MUSTANG

'88 Saleen Race Car



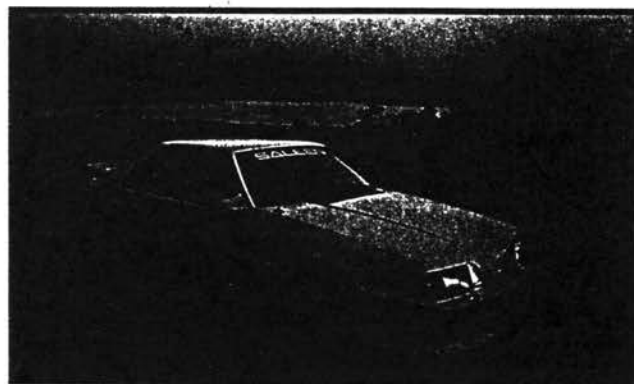
MUSTANG

'88 Saleen Conv.



MUSTANG

'89 Police Car



MUSTANG

'89 Saleen SSC



MUSTANG

'90 Saleen Calif

